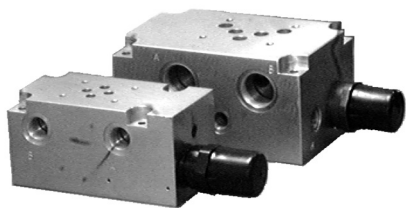


## Base Manifold with Pressure Relief Valve for ISO 4401-03 (05) Valves

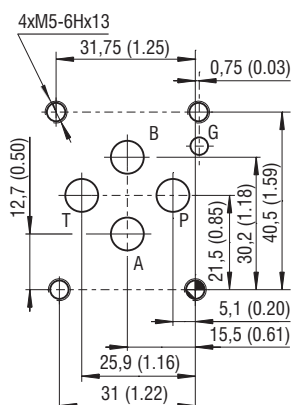
### DP6

Size 06, 10 (D03, D05) • Q<sub>max</sub> 50, 120 l/min (13, 32 GPM) • p<sub>max</sub> 350 bar (5100 PSI)



DP6-06-\*-VPP1T\*

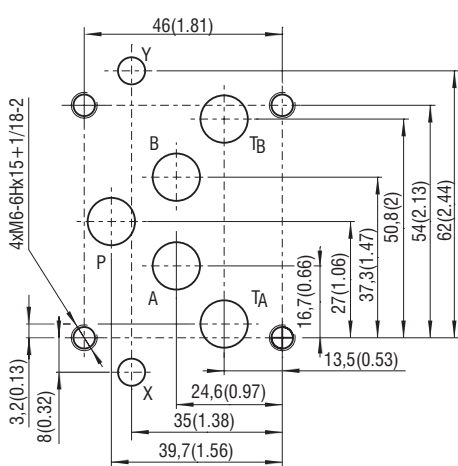
ISO 4401-03-02-0-05 (CETOP 03)



Ports P, A, B, T - max Ø 7.5 mm (0.29 in)

DP6-10-\*-VPP1T\*

ISO 4401-05-04-0-05 (CETOP 05)



Ports P, A, B, T - max Ø 11.2 mm (0.44 in)

### Technical Features

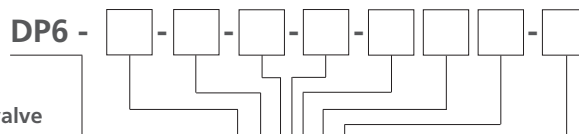
- › Base manifolds used for hydraulic systems or power units which require only one directional valve assembly
- › Designed for two sizes of flange mounted valves with mounting interface acc. to ISO 4401-03 (CETOP 03) or ISO 4401-05 (CETOP 05)
- › Integrated direct operated pressure relief valve up to 120 l/min (13.32 GPM)
- › Suitable for horizontal mounting on the tank cover of the pump drive unit, or for vertical arrangement with the pump situated in the tank under the oil level
- › Wide pressure range up to 320 bar for both sizes of pressure relief valves
- › In the standard version, the plate is zinc-coated for 240 h protection acc. to ISO 9227 and the pressure valve is black-oxide coated

### Technical Data

Valve size		06 (D03)	10 (D05)
Max. operating pressure (steel)		bar (PSI)	
		350 (5080)	
Max. flow rate		l/min (GPM)	120 (32)
		50 (13)	
Mass with valve	DP6-06*	kg (lbs)	
	DP6-10*	4.1 (9.0)	
		7.7 (17.0)	

	Data Sheet	Type
General information	GL_0060	Products and operating conditions
Mounting interface / tolerances	SMT_0019	Size 06, 10 / CETOP 03, 05
Spare parts	SP_8010	

### Ordering Code



Base manifold for ISO 4401 modular valve

Size, mounting interface acc. to:  
 ISO 4401-03-02-0-05, DIN 24340 (CETOP 03) **06**  
 ISO 4401-05-04-0-05, DIN 24340 (CETOP 05) **10**

Pressure relief valve cavity  
 M28x1,5 / QP2 **QP2**  
 M35x1,5 / QT2 **QT2**

Port size  
 P, T, A, B ... G 3/8, M ... G 1/4\* **G1**  
 P, T, A, B ... G 3/4, M ... G 1/4\*\* **G2**  
 P, T, A, B ... SAE-6, M ... SAE-4\* **S1**  
 \*Only for size 06  
 \*\*Only for size 10

Pressure relief mode  
 without pressure relief valve **No designation**  
 VPP1-06, 10 **VPP1**  
 VPP2-06 **VPP2**

Adjustment option  
 allen key (hex. 6) with protective cap **T**  
 hand knob, plastic **RP**

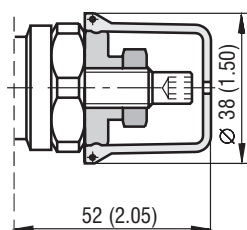
Surface treatment  
**No designation**  
 plate zinc-coated (ZnCr-3),  
 ISO 9227 (240h),  
 the pressure valve  
 is black-oxide coated

Seals  
**No designation** **NBR**  
**N** Without seal rings

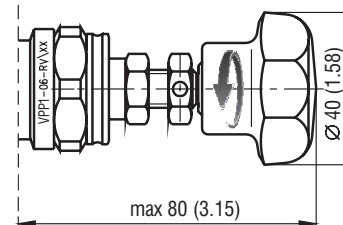
Pressure range  
**2,5** up to 25 bar (360 PSI)  
**6,3** up to 63 bar (910 PSI)  
**10** up to 100 bar (1450 PSI)  
**16** up to 160 bar (2320 PSI)  
**25** up to 250 bar (3630 PSI)  
**32** up to 320 bar (4640 PSI)

### Adjustment Options dimensions in millimeters (inches)

DP6-06-\*-VPP1T\*  
Model T

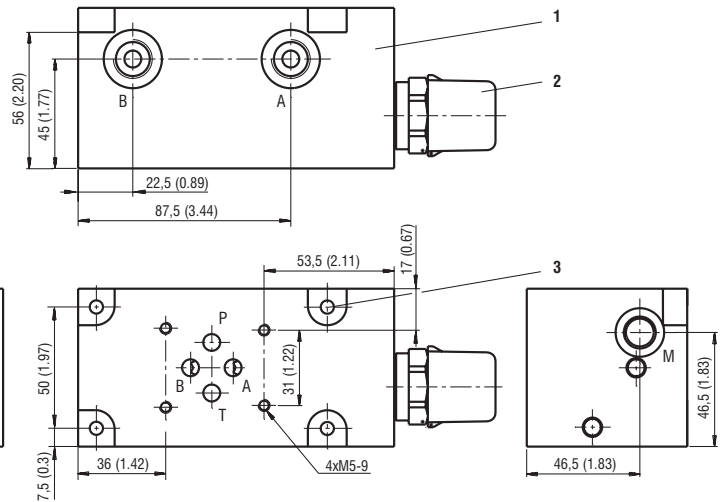
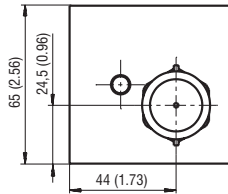
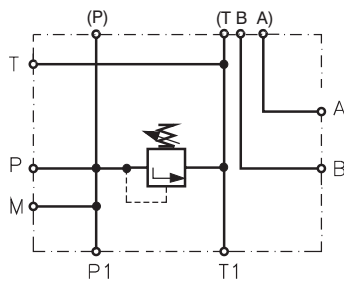


DP6-06-\*-VPP1RP\*  
Model RP

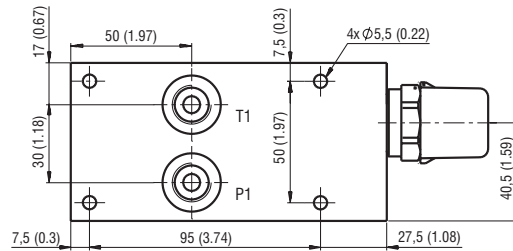
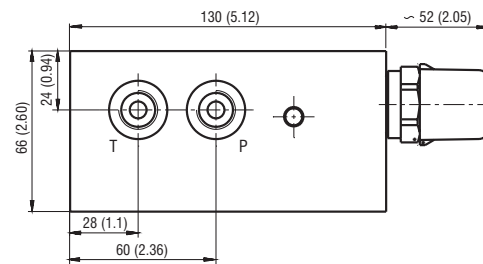


Dimensions in millimeters (inches)

DP6-06-\*-VPP1T\*

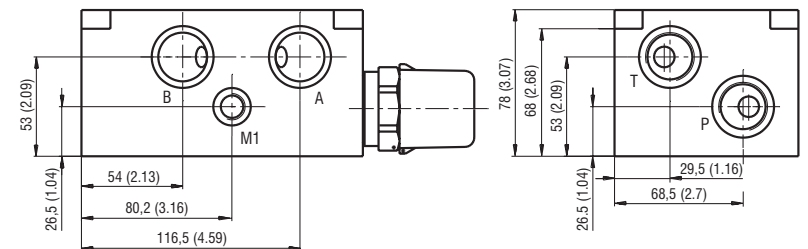
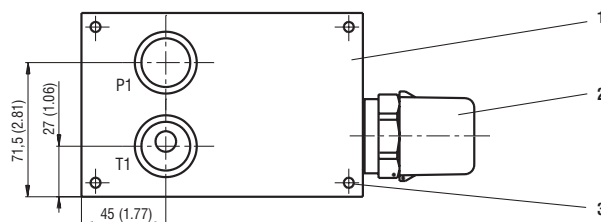
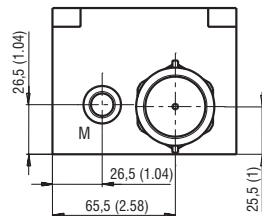
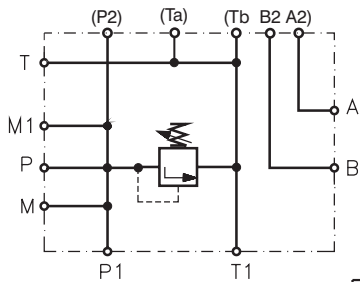


Port	Thread	Counterbore	Counterbore depth
A	G3/8, SAE-6	Ø 24 (0.94)	1 (0.04)
B	G3/8, SAE-6	Ø 24 (0.94)	1 (0.04)
P	G3/8, SAE-6	Ø 24 (0.94)	1 (0.04)
T	G3/8, SAE-6	Ø 24 (0.94)	1 (0.04)
P1	G3/8, SAE-6	Ø 28 (1.1)	5.5 (0.22)
T1	G3/8, SAE-6	Ø 28 (1.1)	5.5 (0.22)
M	G1/4, SAE-4	Ø 20 (0.79)	1 (0.04)

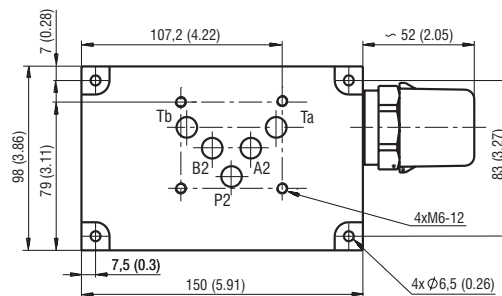


- 1 Base block
- 2 Pressure relief valve
- 3 4 mounting holes

DP6-10-\*-VPP1T\*



Port	Thread	Counterbore	Counterbore depth
A	G3/4	Ø 33 (1.3)	1 (0.04)
B	G3/4	Ø 33 (1.3)	1 (0.04)
P	G3/4	Ø 33 (1.3)	1 (0.04)
T	G3/4	Ø 33 (1.3)	1 (0.04)
P1	G3/4	Ø 38 (1.5)	5.5 (0.22)
T1	G3/4	Ø 38 (1.5)	5.5 (0.22)
M	G1/4	Ø 20 (0.79)	1 (0.04)
M1	G1/4	Ø 20 (0.79)	1 (0.04)



- 1 Base block
- 2 Pressure relief valve
- 3 4 mounting holes