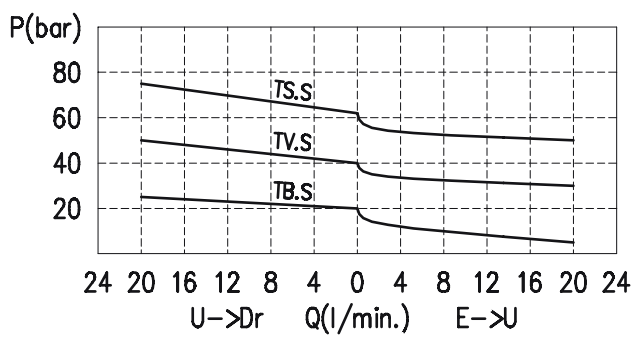
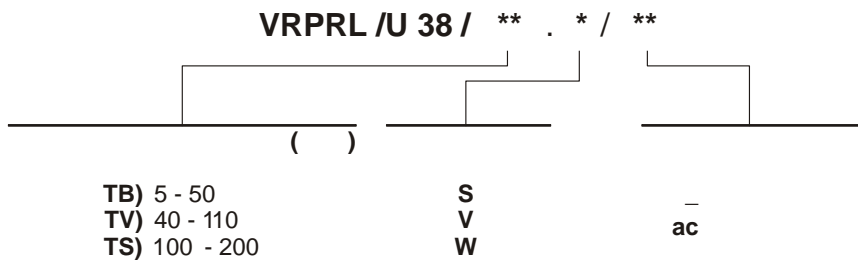
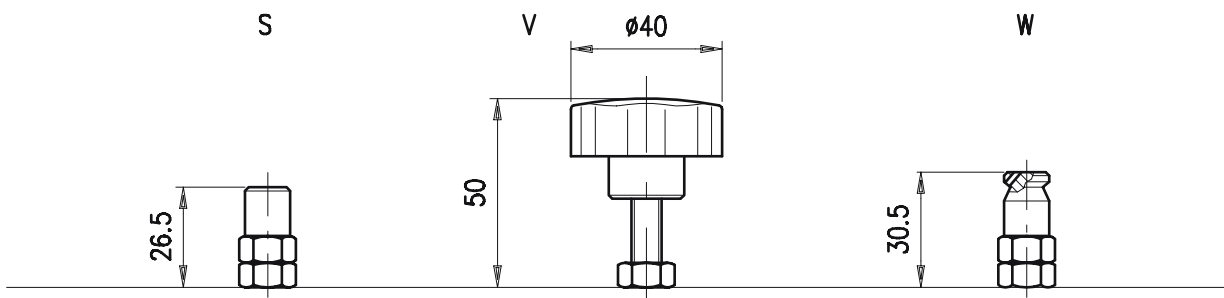


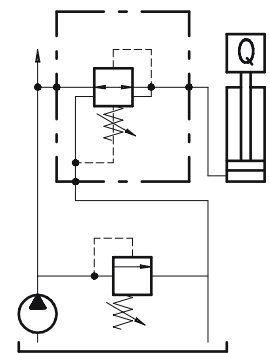
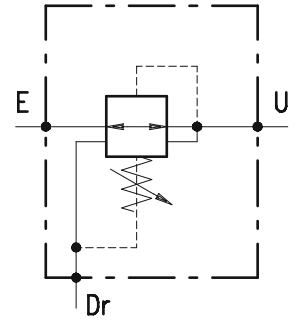
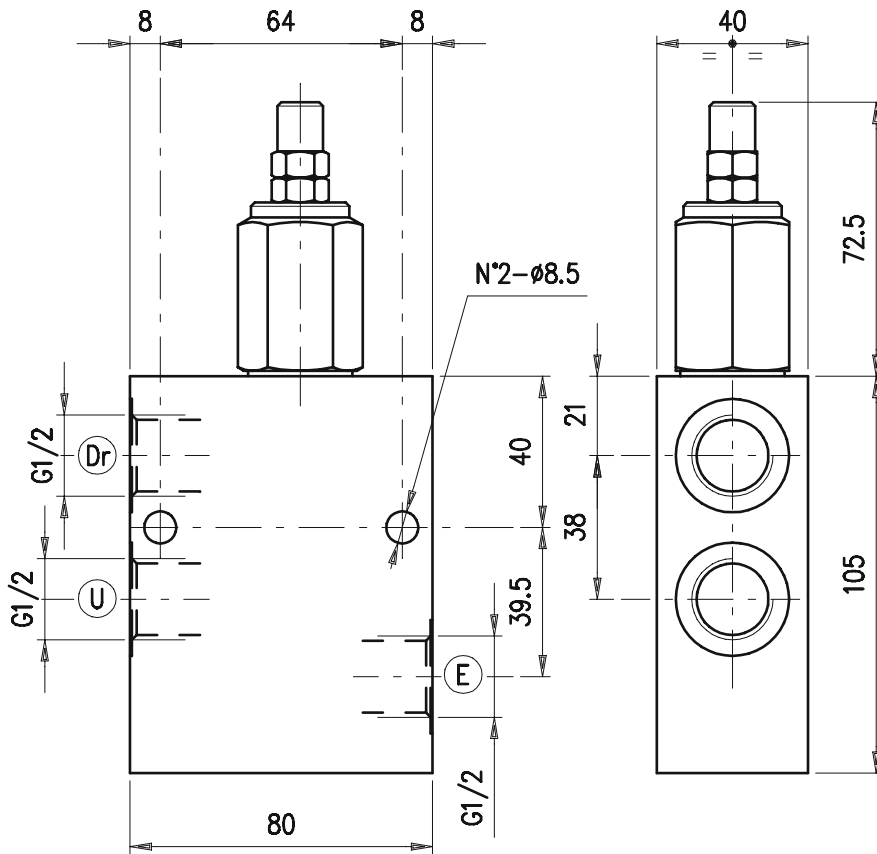
:
 - 0.80
 - 1.73
 :



- 46



• ()

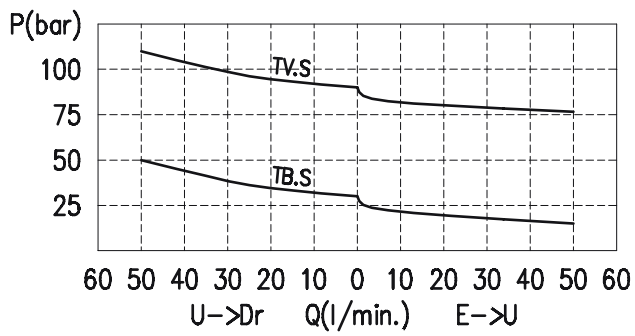


•
•
• E U, U Dr, U U E

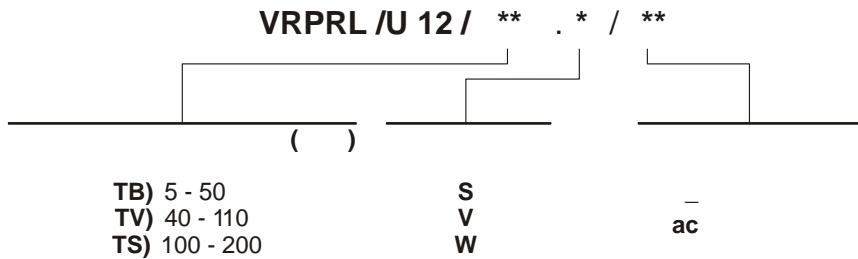
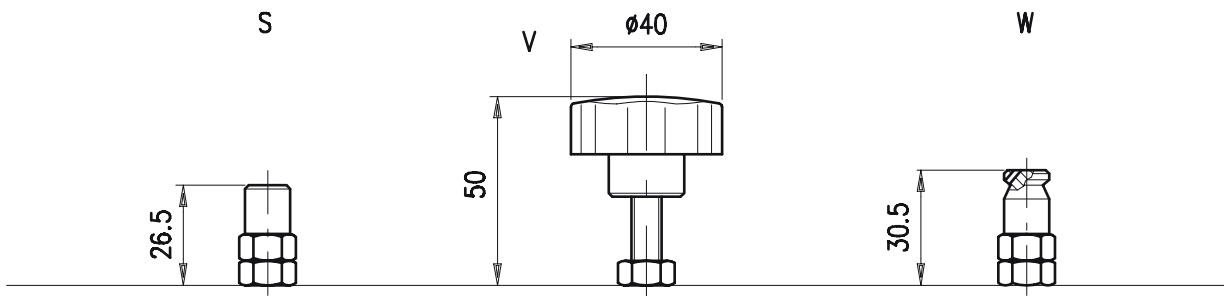
• : 50 /
• :
- 210 ().
- 350 ().
• :
- 5 - 50 (: 40 5 /).
- 40 - 110 (: 90 5 /).
- 100 - 200 (: 160 5 /).
• / 46
• :
- .-25°C .90°C
- .-20°C .120°C

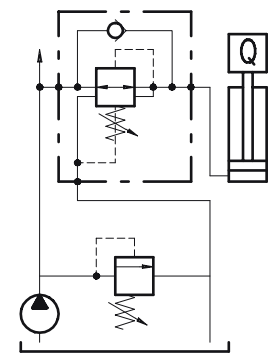
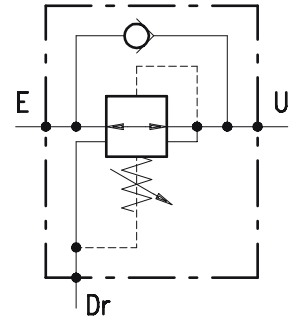
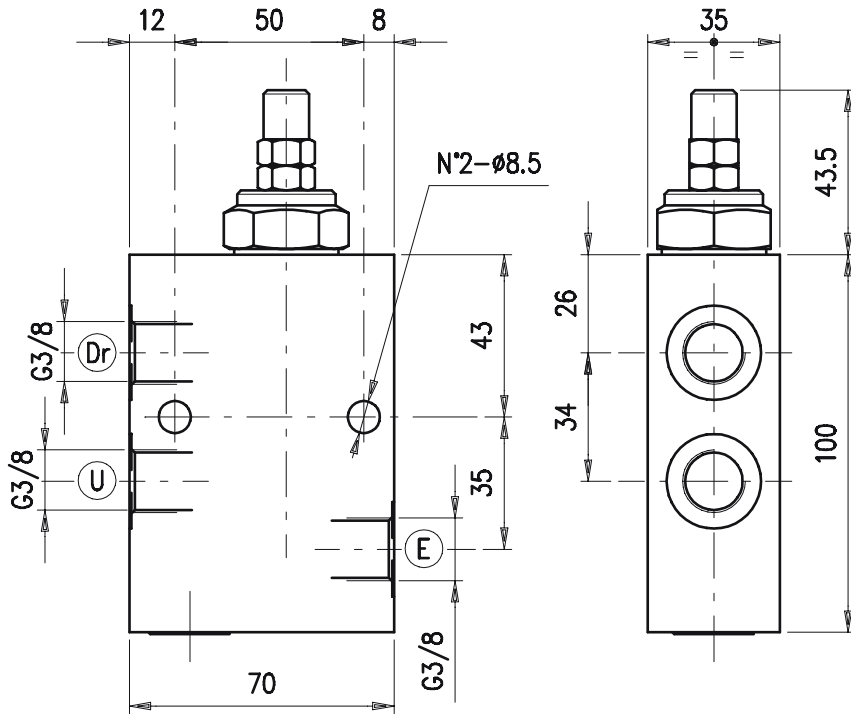
• : : 10 200 : 19/16 ISO 4406.

- : 1.20
 - : 2.53
 :



- 46





E U, U Dr, U U U E

- 210 ()
- 350 ()
- 5 - 50 (: 40 5 /)
- 40 - 110 (: 90 5 /)
- 100 - 200 (: 160 5 /)

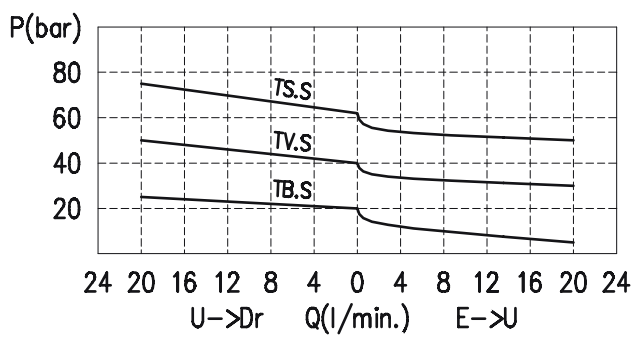
Dr : 20 3 150 46

- .-25°C .90°C
- .-20°C .120°C

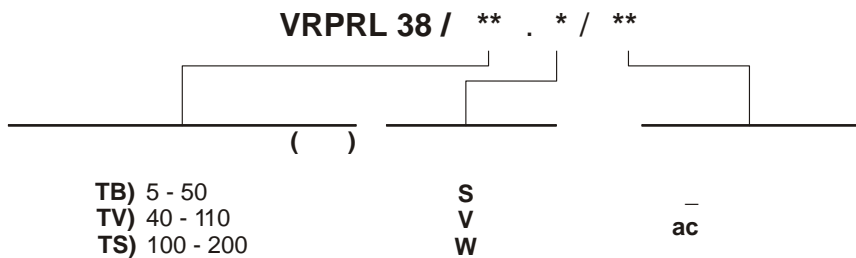
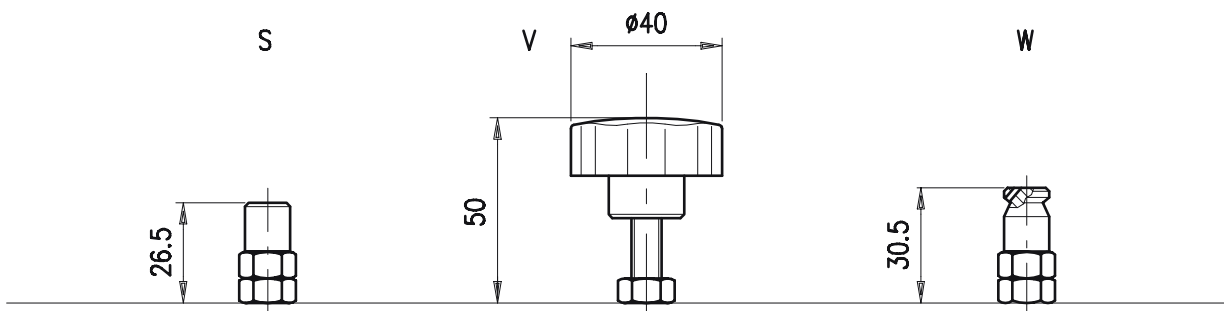
: 10 200

19/16 ISO 4406.

- :
 - 0.85
 - 1.73
 :

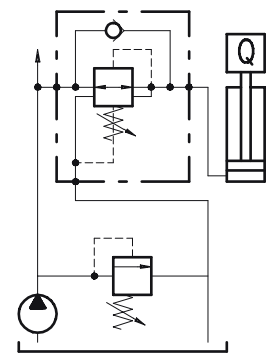
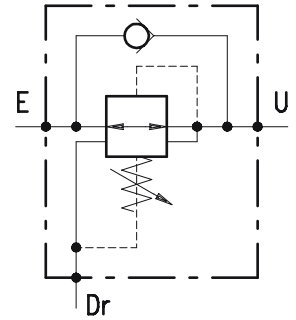
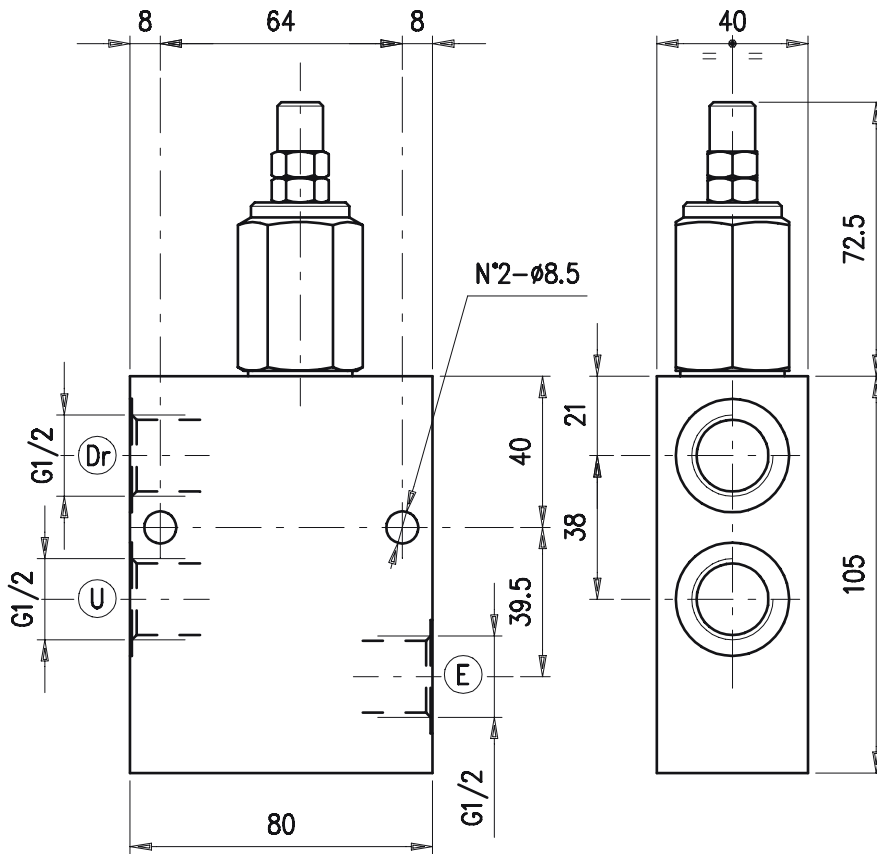


- 46



TB) 5 - 50
 TV) 40 - 110
 TS) 100 - 200

• ()

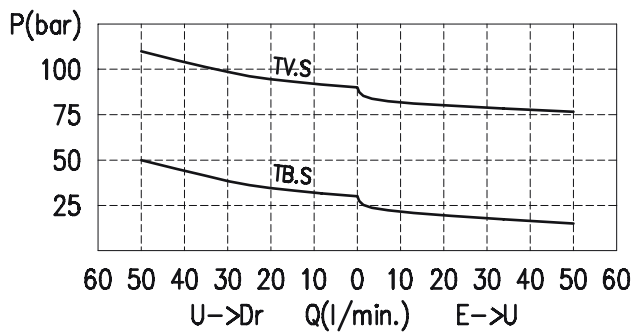


•
 •
 • E U, U Dr, U U U E

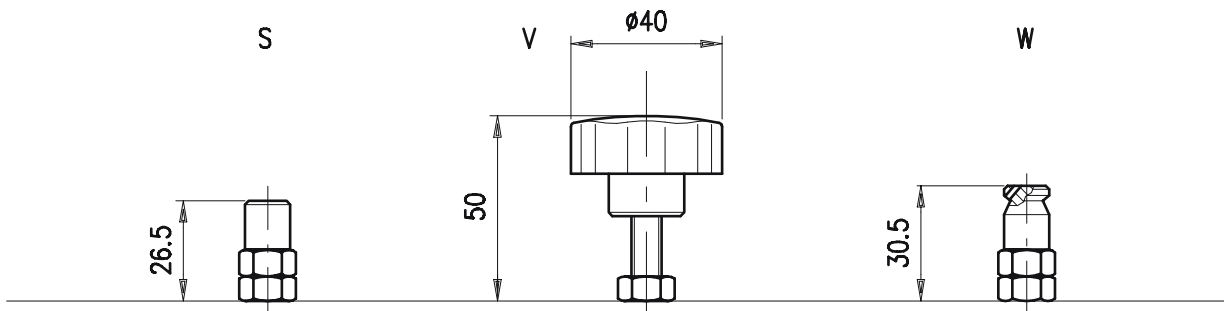
• : 50 / .
 :
 - 210 ().
 - 350 ().
 • :
 - 5 - 50 (: 40 5 /).
 - 40 - 110 (: 90 5 /).
 - 100 - 200 (: 160 5 /).
 • / 46 .
 Dr : 20 3 150
 :
 - .-25°C .90°C
 - .-20°C .120°C

• : 10 200 .
 :
 19/16 ISO 4406.

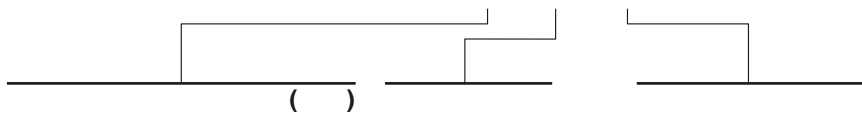
- 2.21
- 2.54



- 46



VRPRL 12 / ** . * / **



TB) 5 - 50
 TV) 40 - 110
 TS) 100 - 200

S
 V
 W

ac