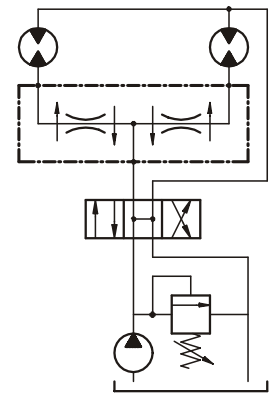


E	U1-U2
G 3/8	G 3/8



U1 E U1 U2  
U2

U1 U2

: 4-12 /

:

210

350

:

- 50%-50% ( )

- 33%-66% ( )

- 30%-70% ( )

- 20%-80% ( )

- 25%-75% ( )

- 40%-60% ( )

: + -5% U1 U2 120

U1 U2 ( 50%-50%)

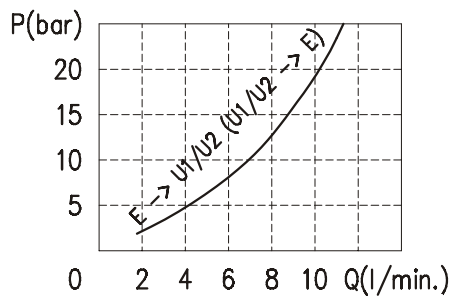
:

- . -25°C .90°C

- . -20°C .120°C

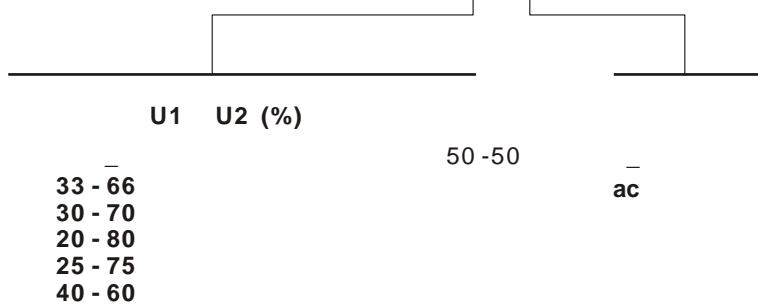
: 10 200

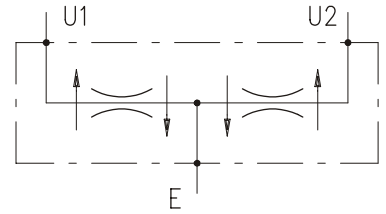
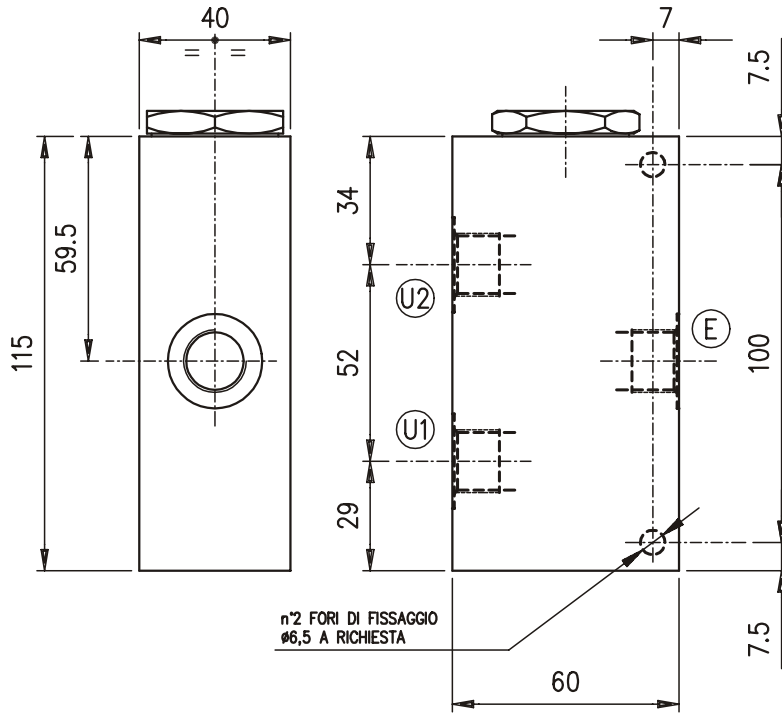
:  
 - 0.85  
 - 1.86  
 :



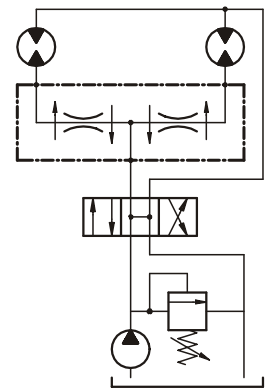
- 46

**VDFR 38-12 / \* / \***





E	U1-U2
G 3/8	G 3/8



/

U1 E U1 U2  
U1 U2.

U1 U2.

: 12-24 /  
:  
- 210  
- 350

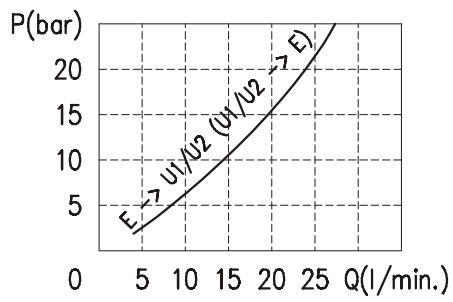
50%-50% ( )  
- 33%-66% ( )  
- 30%-70% ( )  
- 20%-80% ( )  
- 25%-75% ( )  
- 40%-60% ( )

: + -5% U1 U2 120 U1 U2 ( 50%-50%)

:-25°C .90°C  
- .-20°C .120°C

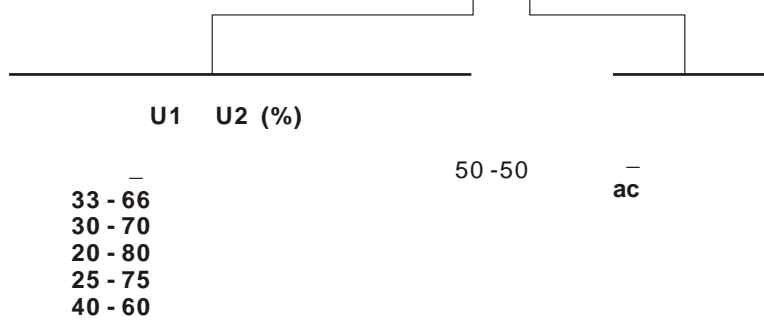
: 10 200

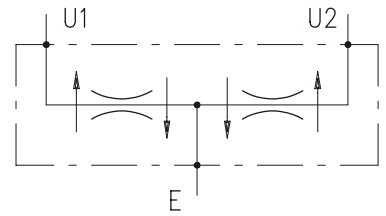
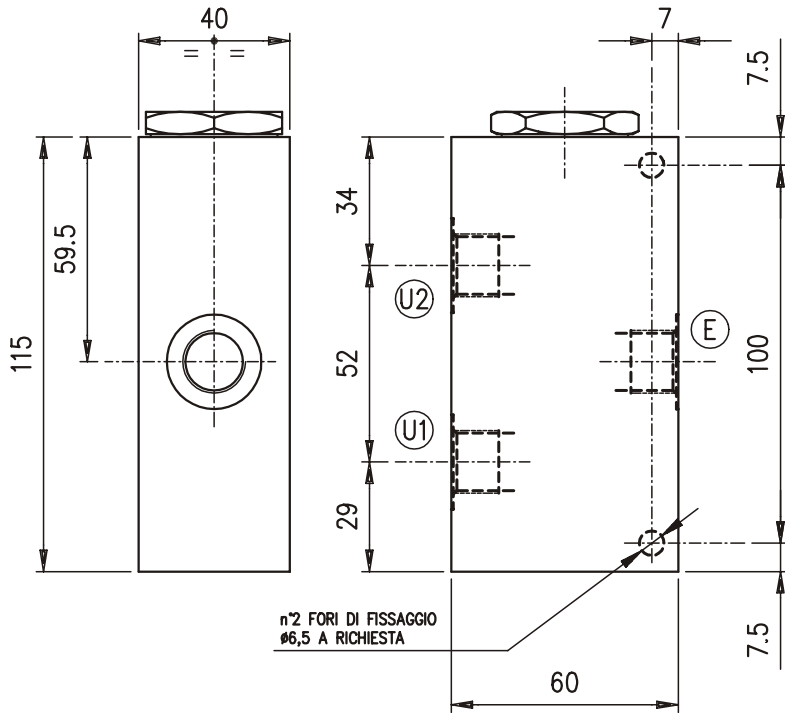
:  
- 0.85  
- 1.86  
:



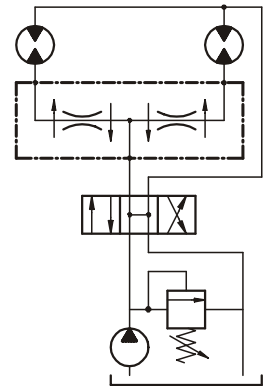
- 46

**VDFR 38-24 / \* / \***





E	U1-U2
G 1/2	G 3/8



U1 E U1 U2  
U2 U2.

U1 U2.

: 24-40 /

:

210

350

:

- 50%-50% ( )
- 33%-66% ( )
- 30%-70% ( )
- 20%-80% ( )
- 25%-75% ( )
- 40%-60% ( )

: + -5% U1 U2 120

U1 U2 ( 50%-50%)

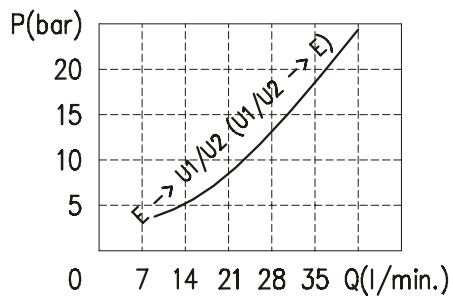
:

- . -25°C .90°C
- . -20°C .120°C

:

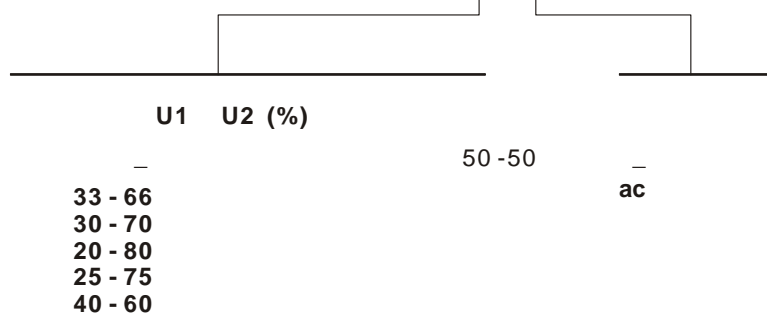
10 200

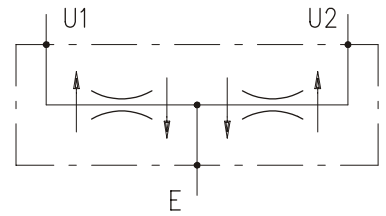
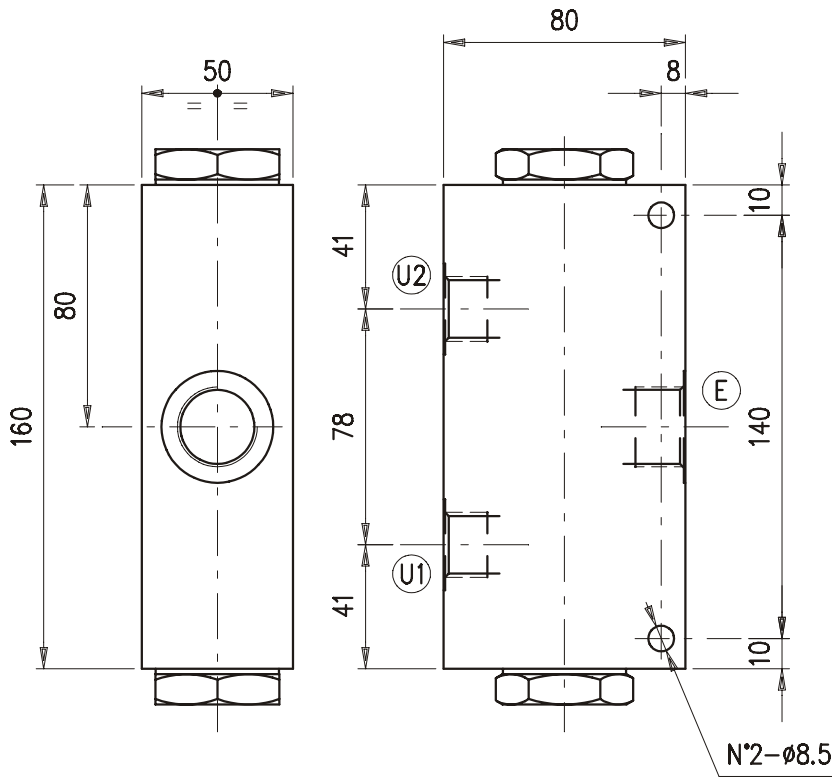
:  
- 0.85  
- 1.86  
:



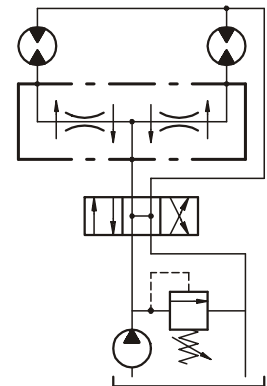
- 46

**VDFR 12-40 / \* / \***





E	U1-U2
G 3/4	G 1/2



/

U1 E U1 U2  
U1 U2.

U1 U2.

: 40-90 /  
:  
- 210  
- 350

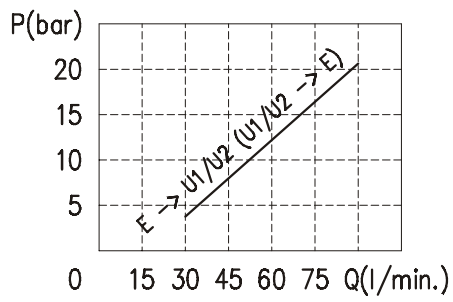
50%-50% ( )  
- 33%-66% ( )  
- 30%-70% ( )  
- 20%-80% ( )  
- 25%-75% ( )  
- 40%-60% ( )

: + -5% U1 U2 120 U1 U2 ( 50%-50%)

:-25°C .90°C  
- .-20°C .120°C

: 10 200

:  
- 2.10  
- 4.42  
:



- 46

**VDFR 34-90 / \* / \***



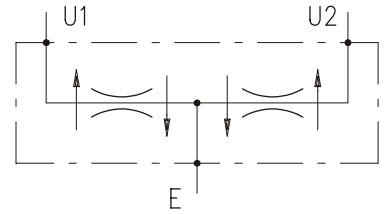
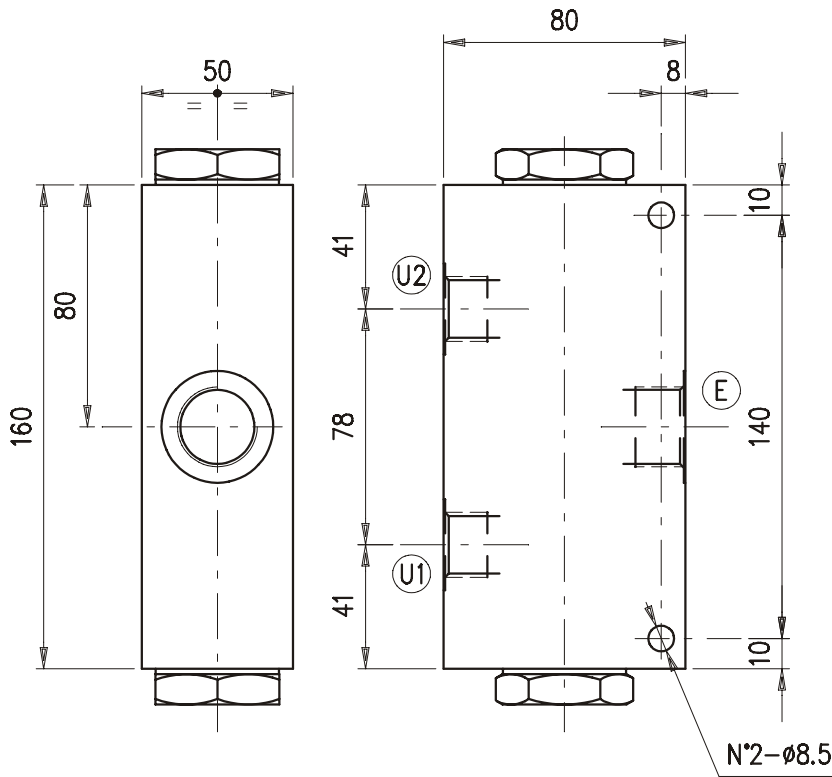
U1 U2 (%)

-  
33 - 66  
30 - 70  
20 - 80  
25 - 75  
40 - 60

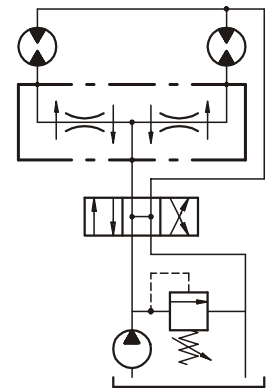
50 - 50

-  
ac





E	U1-U2
G 1"	G 3/4



U1 E U1 U2  
U1 U2.

U1 U2.

: 90-150 /

:

210

350

:

- 50%-50% ( )

- 33%-66% ( )

- 40%-60% ( )

: + -5% U1 U2 120

U1 U2 ( 50%-50%)

:

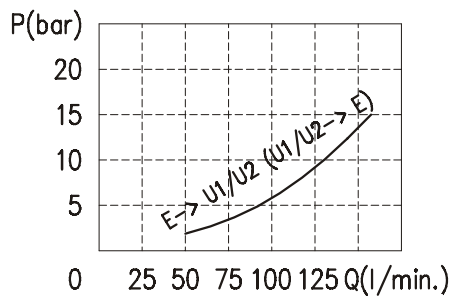
- . -25°C .90°C

- . -20°C .120°C

10 200

19/16 ISO 4406.

2.07



- 46

**VDFR 100-150 / \* / \***

