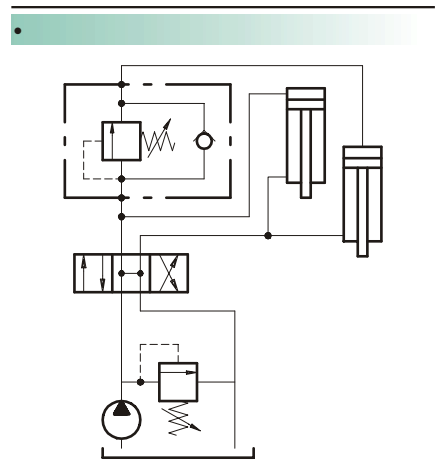
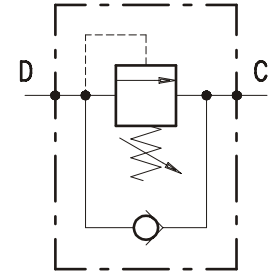
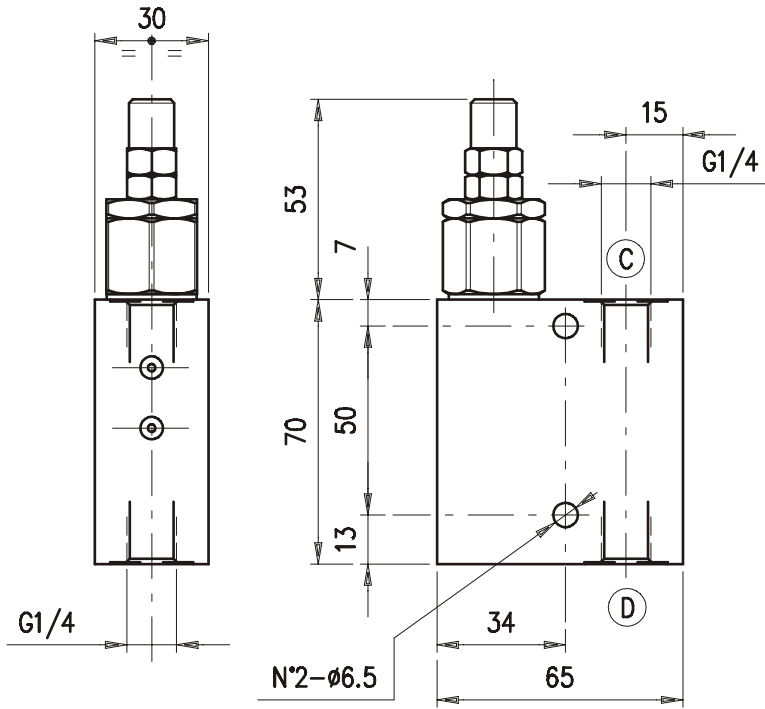


• ()



•

• D C, D

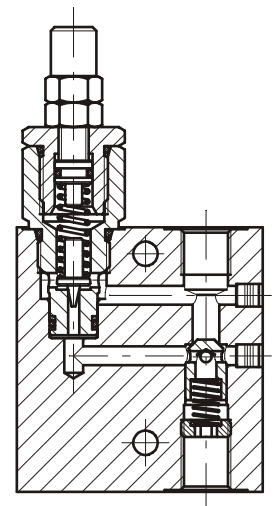
- : 10 / .
- :
- - 210 ().
- - 350 ().
- :
- - 5 - 50 (: 30 5 /).
- - 20 - 220 (: 160 5 /).
- - 180 - 350 (: 280 5 /).

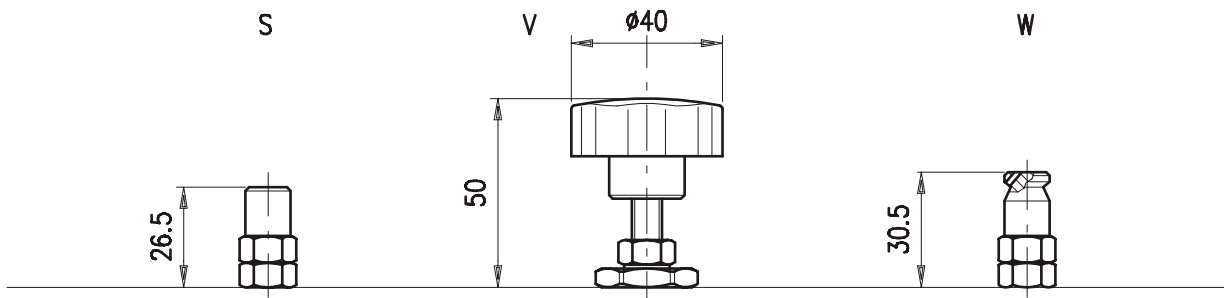
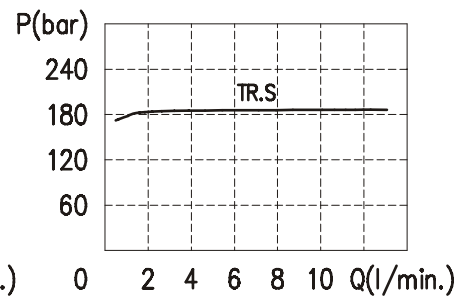
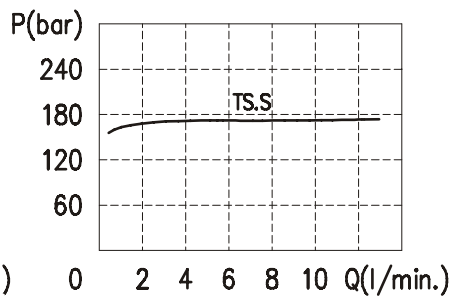
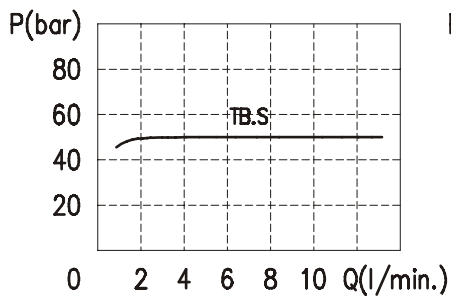
- :
- - . -25°C . 90°C
- - . -20°C . 120°C

• : 10 200 .

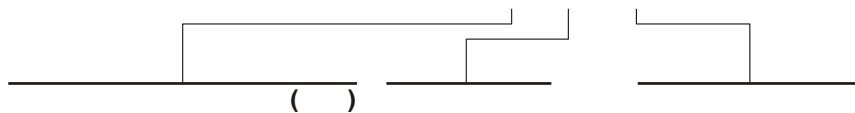
• : : 0.50 1.08

19/16 ISO 4406.





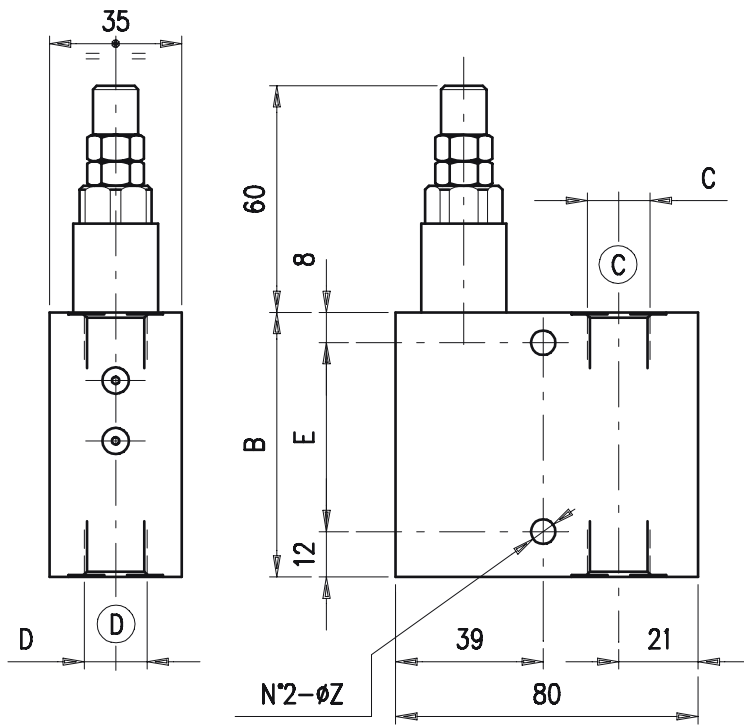
VDSRL 03-14 / * . * / **



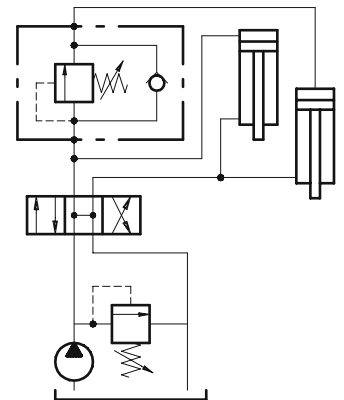
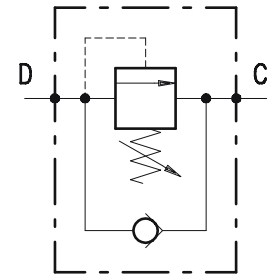
TB) 5 - 50
TS) 20 - 220
TR) 180 - 400

S
V
W

ac

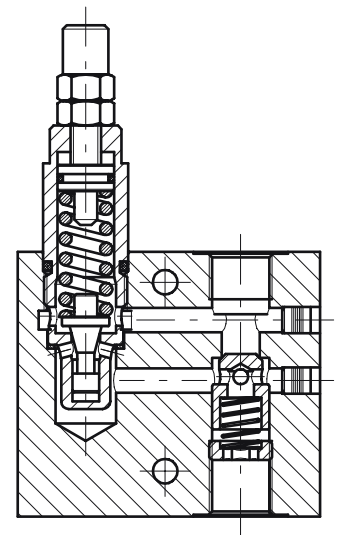


VDSRL	B	C	D	E	Z
5-38	70	G 3/8	G 3/8	50	6.5
5-12	75	G 1/2	G 1/2	55	8.5

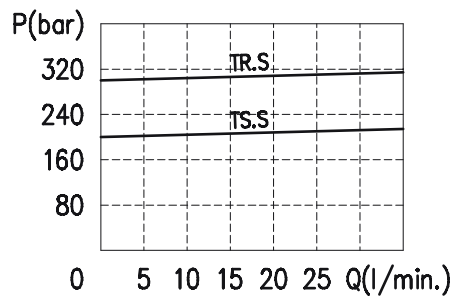
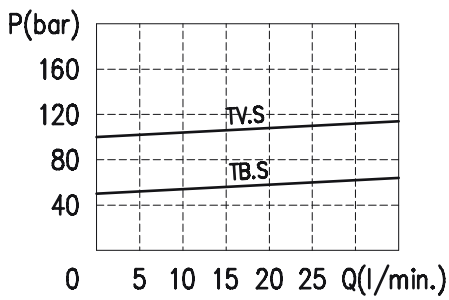


D C, D C,

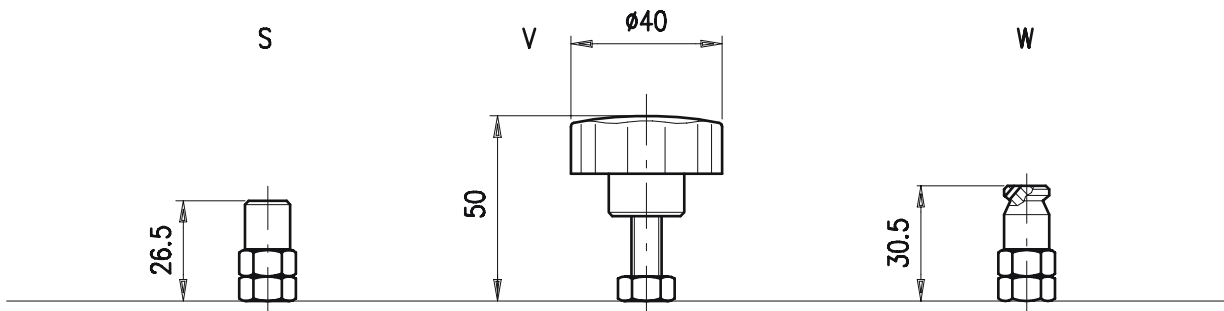
- VDSRL 5 - 38 = 25 / .
- VDSRL 5 - 12 = 35 / .
- 210 ().
- 350 ().
- 5 (:30 5 /).
- 20 - 80 (:60 5 /).
- 50 - 220 (:160 5 /).
- 180 - 350 (:280 5 /).
- .-25°C .90°C
- .-20°C .120°C



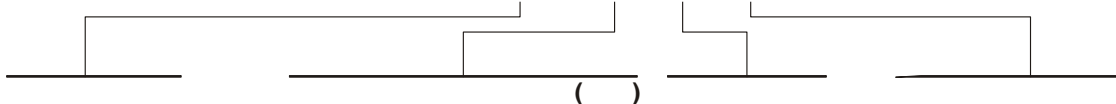
: 10 200 . 19/16 ISO 4406.
 :
 - VDSRL 5 - 38 : 0.65 1.45 ,
 - VDSRL 5 - 12 : 0.70 1.50 ,
 : 1.1000.100.
 :



- 46



VDSRL 5 - ** / ** . * / **

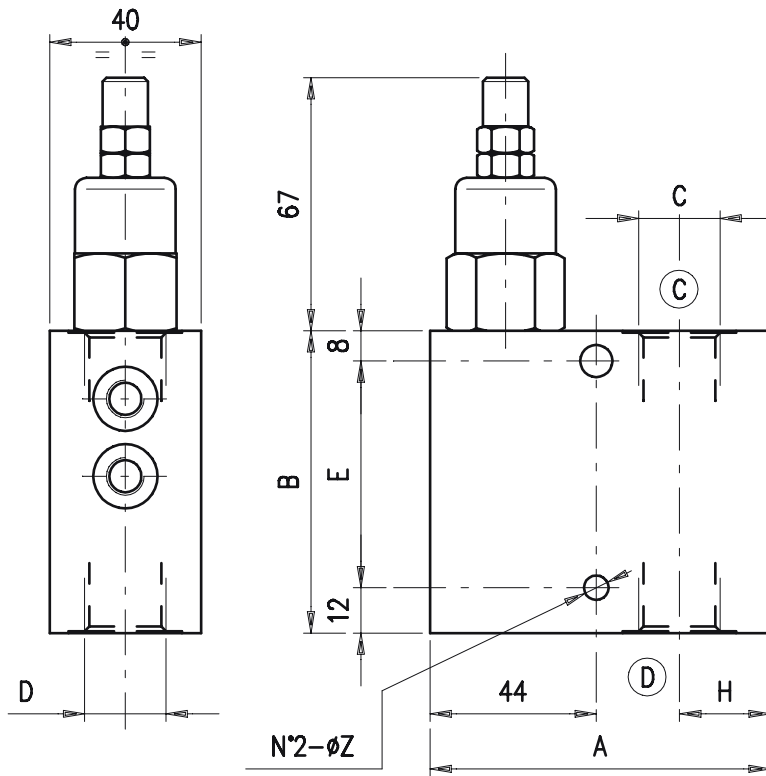


38) 3/8" BSP
12) 1/2" BSP

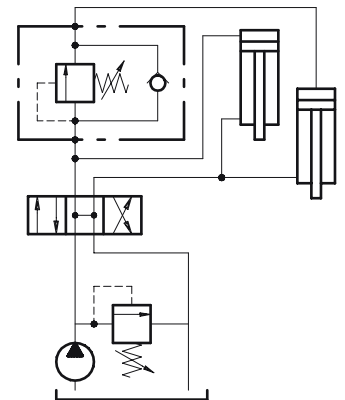
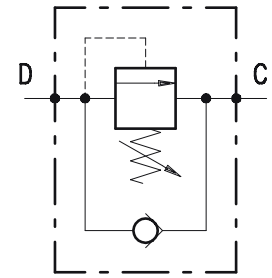
TB) 5 - 50
TV) 20 - 80
TS) 50 - 220
TR) 180 - 350

S
V
W

-
ac



VDSRL	A	B	C	D	E	H	Z
10-12	90	80	G 1/2	G 1/2	60	24	8.5
10-34	95	90	G 3/4	G 3/4	70	27	8.5

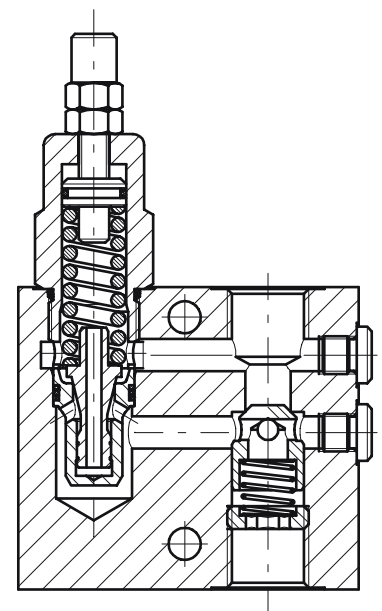


D C, D C, D

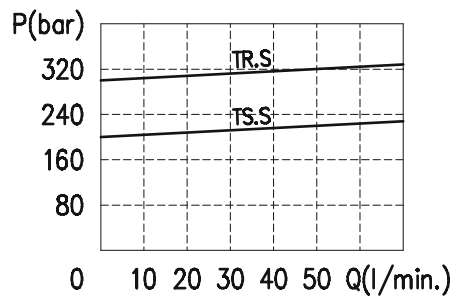
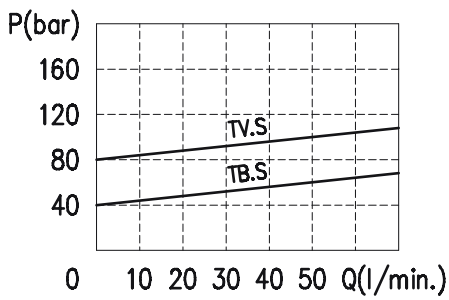
- VDSRL 10 - 12 = 50 /
- VDSRL 10 - 34 = 70 /

- 210 ()
- 350 ()
- 5 - 40 (:30 5 /)
- 20 - 80 (:60 5 /)
- 50 - 220 (:160 5 /)
- 180 - 350 (:280 5 /)

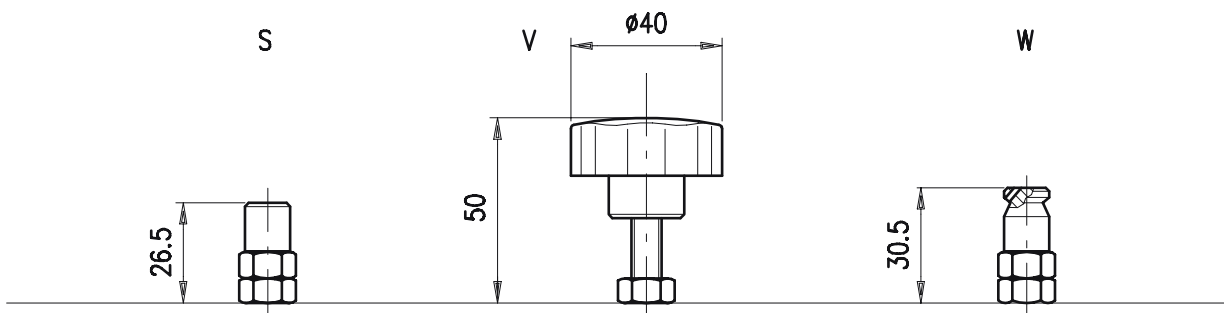
- .-25°C . 90°C
- .-20°C . 120°C



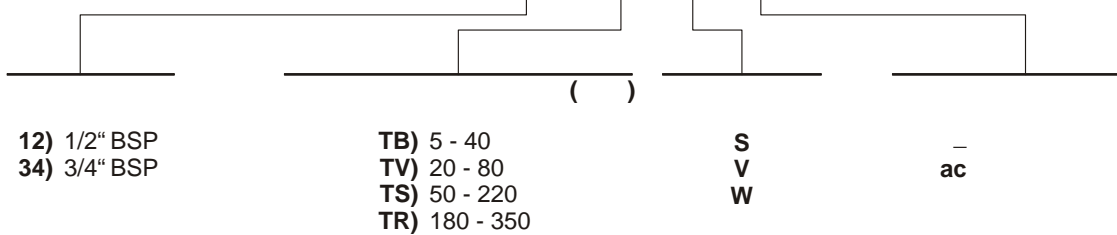
: 10 200 . 19/16 ISO 4406.
 :
 - VDSRL 10 - 12 : 1.00 2.15 ,
 - VDSRL 10 - 34 : 1.10 2.41 ,
 : 1.1000.200.
 :



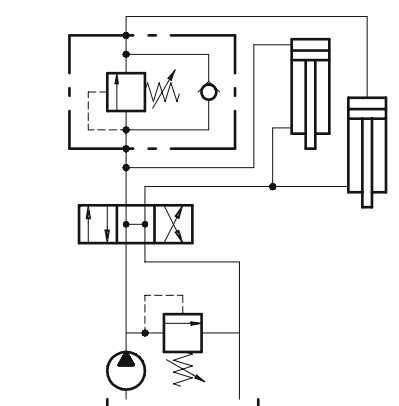
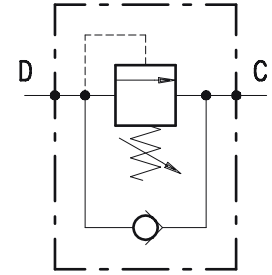
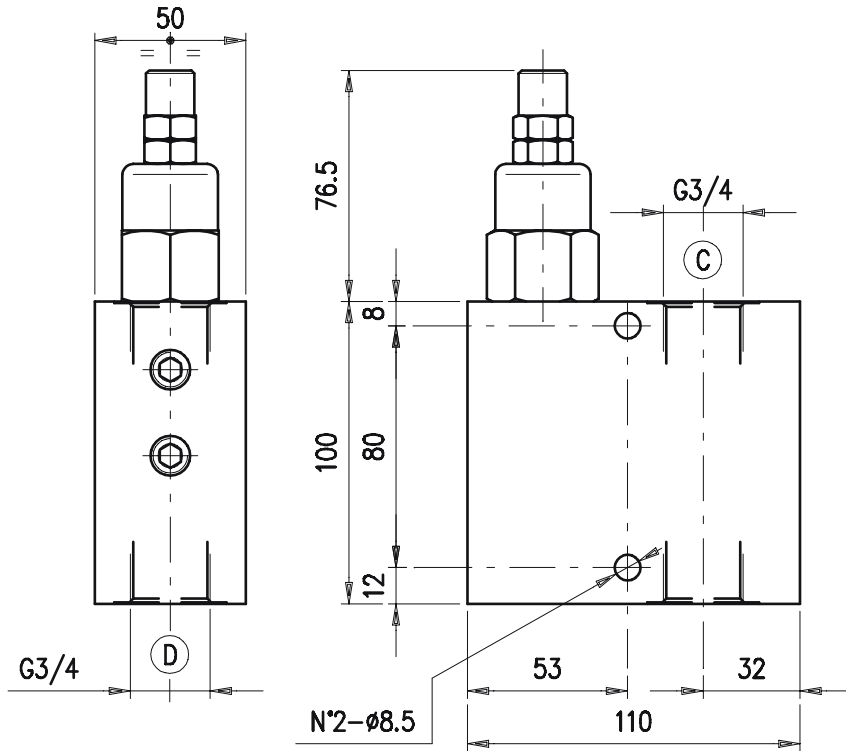
- 46



VDSRL 10 - ** / ** . * / **



• ()



•

•

D C, D

C,

•

: 120 /

:

- 210 ().

- 350 ().

:

- 5 - 40 (: 30 5 /).

- 20 - 80 (: 60 5 /).

- 50 - 220 (: 160 5 /).

- 180 - 350 (: 280 5 /).

/

•

- . -25°C . 90°C

- . -20°C . 120°C

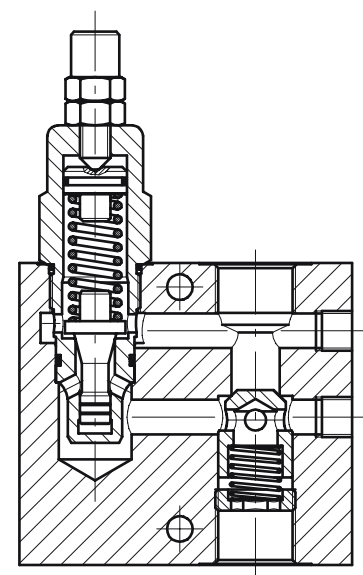
•

:

10 200

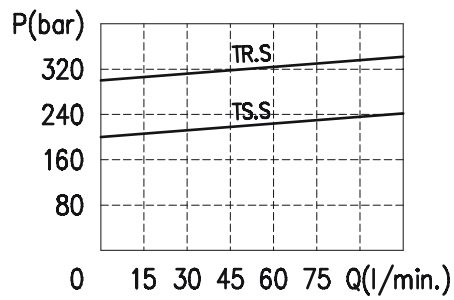
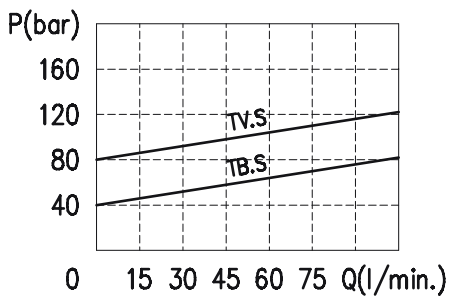
:

19/16 ISO 4406.

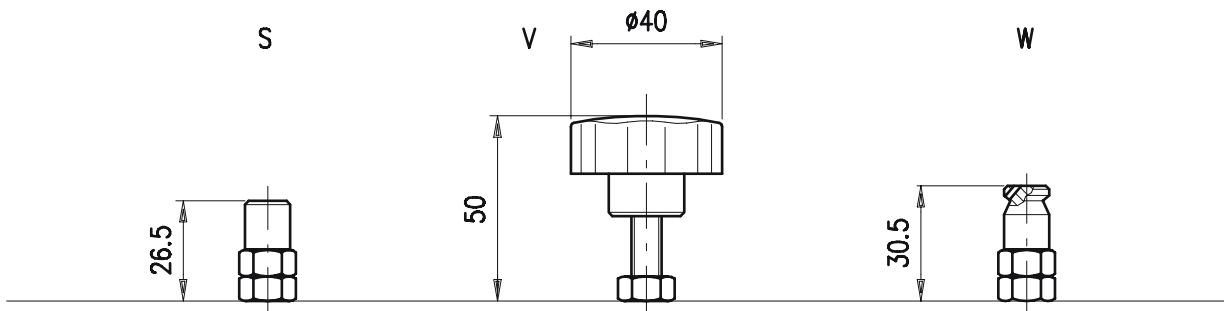


•

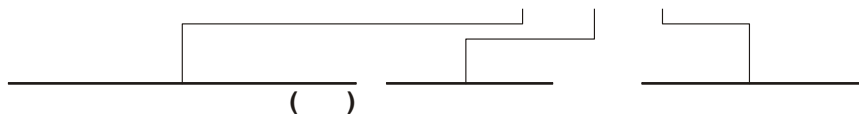
: 1.80
 - 4.00
 : 1.1000.300.
 :



- 46



VDSRL 20 - 34 / ** . * / **

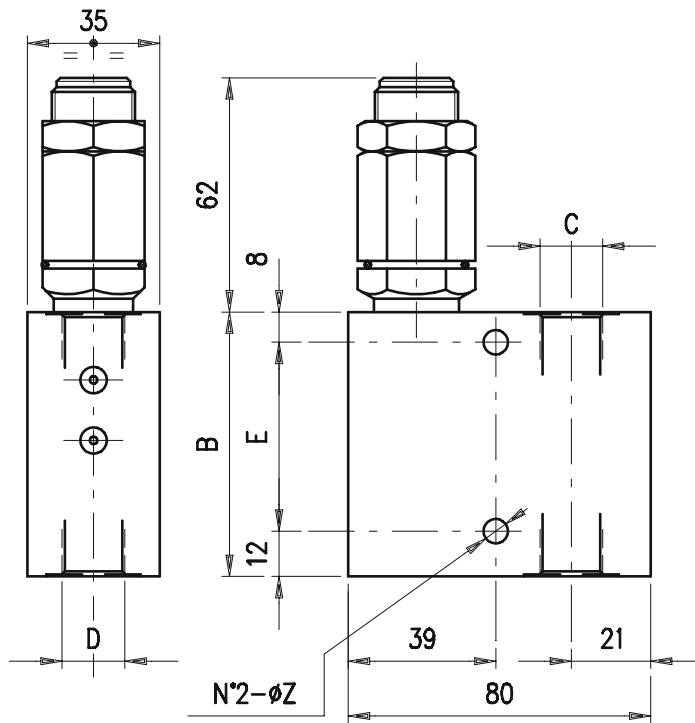


TB) 5 - 40
 TV) 20 - 80
 TS) 50 - 220
 TR) 180 - 350

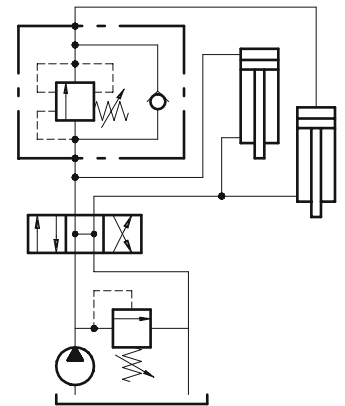
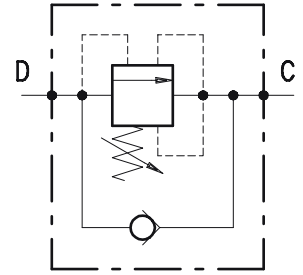
S
 V
 W

ac

()



VDSRL	B	C	D	E	Z
5-38/APP	70	G 3/8	G 3/8	50	6.5
5-12/APP	75	G 1/2	G 1/2	55	8.5



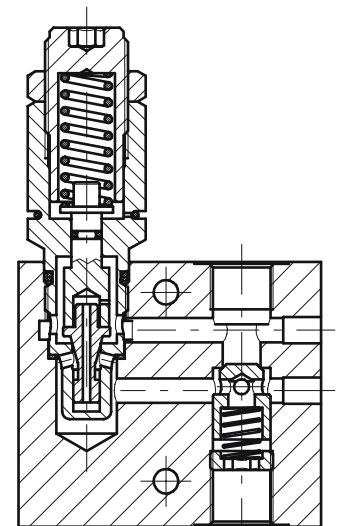
D C, D

- VDSRL 5 - 38 /APP = 25 / .
- VDSRL 5 - 12 /APP = 35 / .

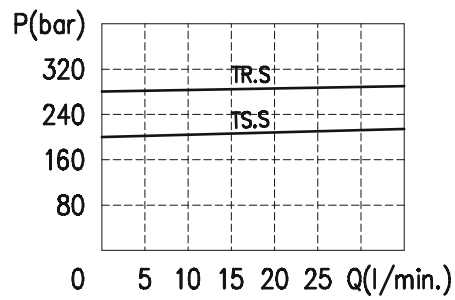
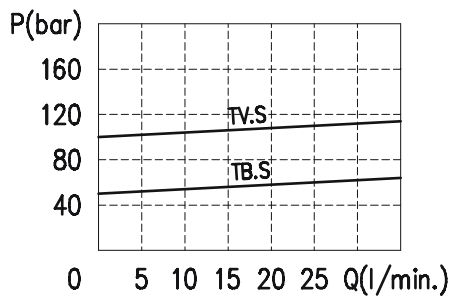
- 210 ().
- 350 ().

- 5 - 50 (:30 5 /).
- 20 - 100 (:60 5 /).
- 50 - 220 (:160 5 /).
- 100 - 350 (:280 5 /).

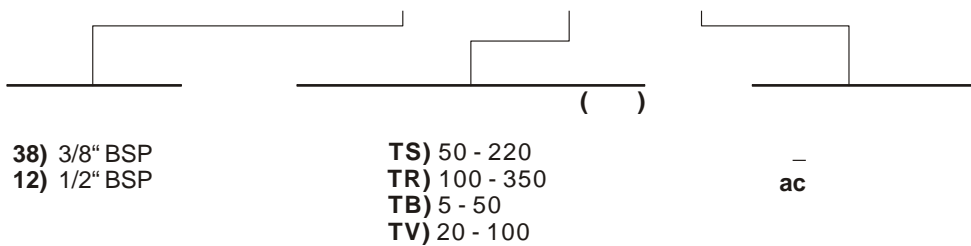
- .-25°C .90°C
- .-20°C .120°C

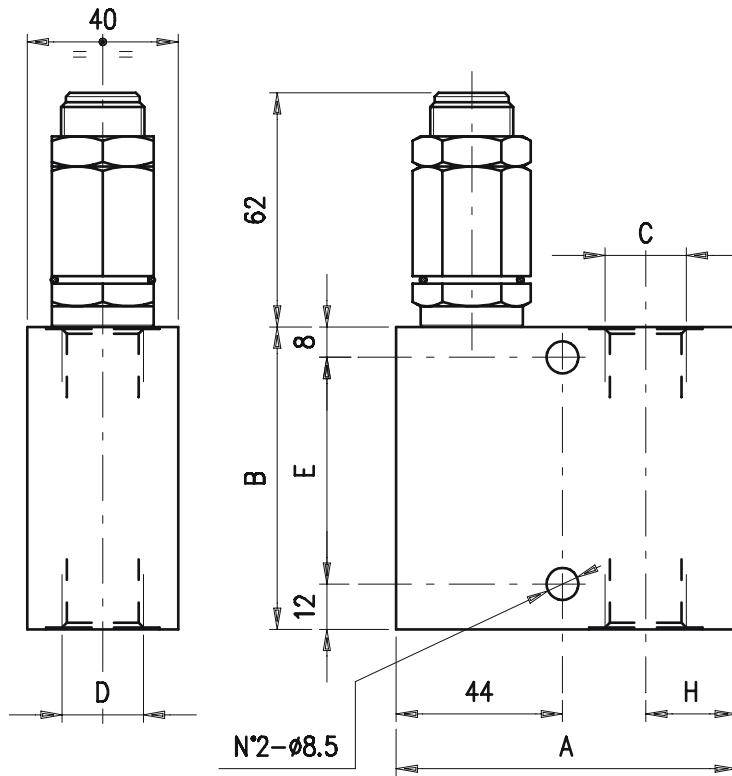


:		10	200		
:				19/16	ISO 4406.
-	VDSRL 5 - 38 /APP : 0.73	1.60	,		
-	VDSRL 5 - 12 /APP : 0.78	1.65	,		
:					

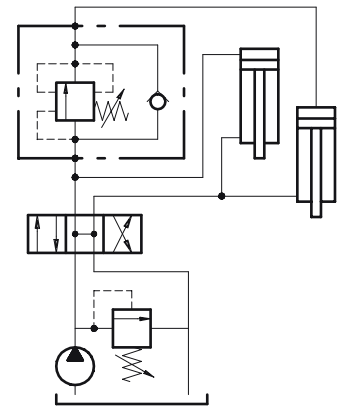
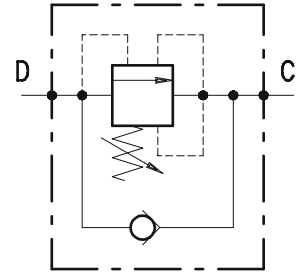


VDSRL 5 - ** / APP / ** . S / **



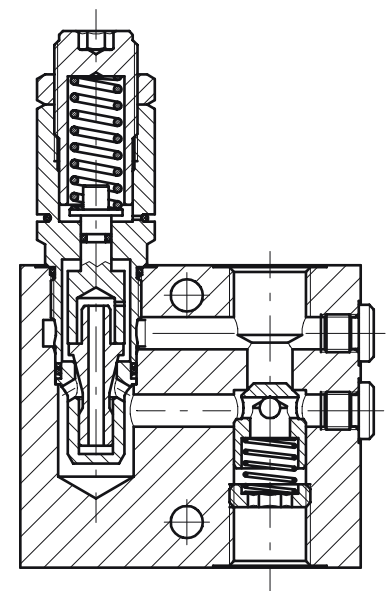


VDSRL	A	B	C	D	E	H
10-12/APP	90	80	G 1/2	G 1/2	60	24
10-34/APP	95	90	G 3/4	G 3/4	70	27

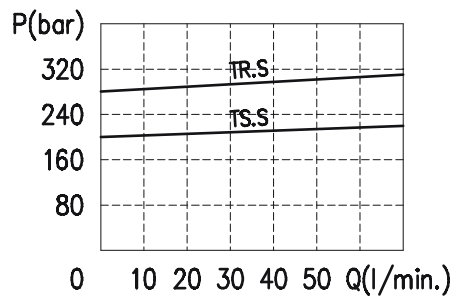
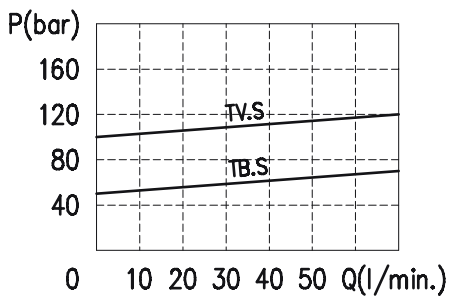


D C, D

- VDSRL 10 - 12 /APP = 50 / .
- VDSRL 10 - 34 /APP = 70 / .
- 210 ().
- 350 ().
- 5 - 50 (:30 5 /).
- 20 - 100 (:60 5 /).
- 50 - 220 (:160 5 /).
- 100 - 350 (:280 5 /).
- . -25°C . 90°C
- . -20°C . 120°C

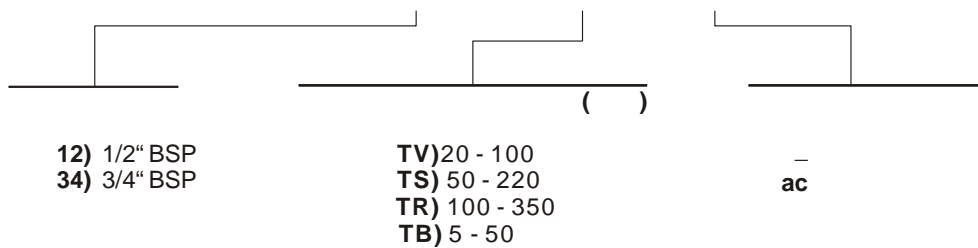


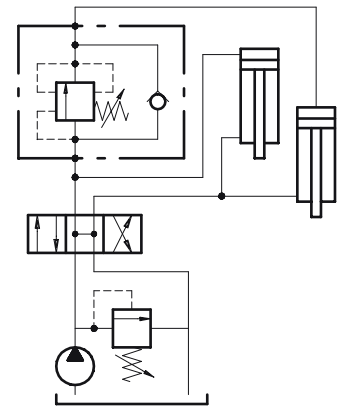
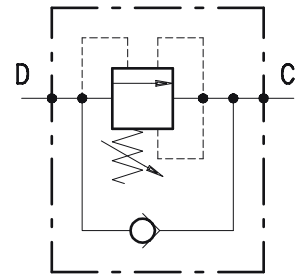
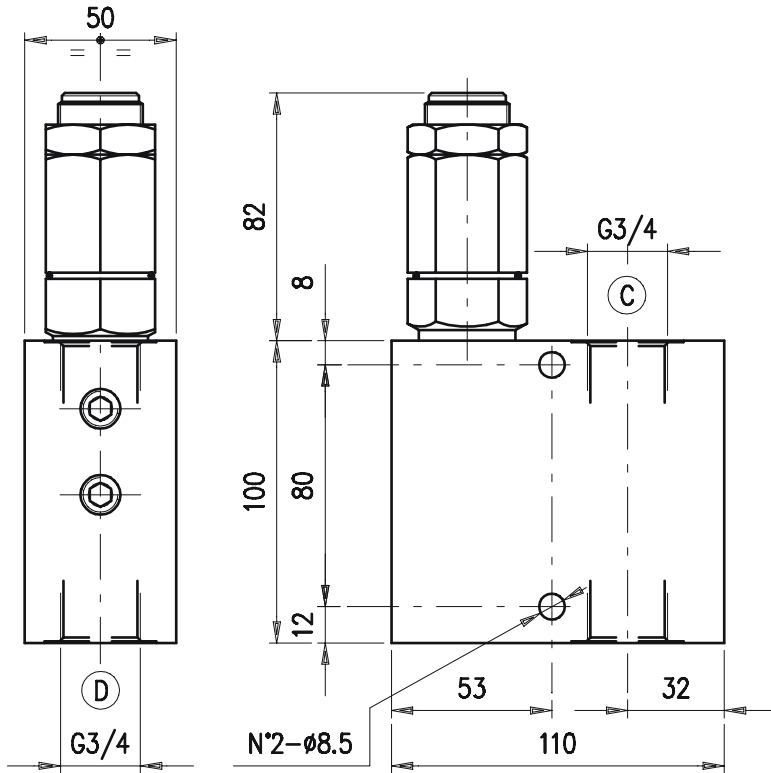
:		10	200		
:				19/16	ISO 4406.
-	VDSRL 10 - 12 /APP : 1.00	2.15	,		
-	VDSRL 10 - 34 /APP : 1.10	2.41	,		
:					



- 46

VDSRL10 - ** / APP / ** . S / **





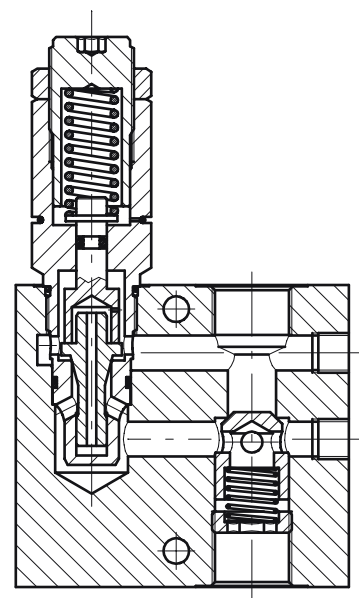
D C, D

: 120 /

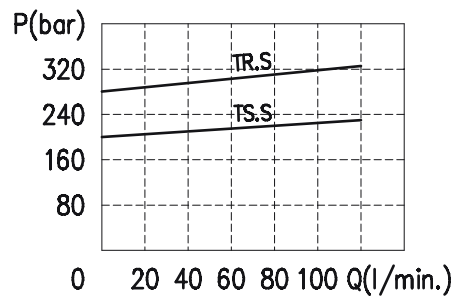
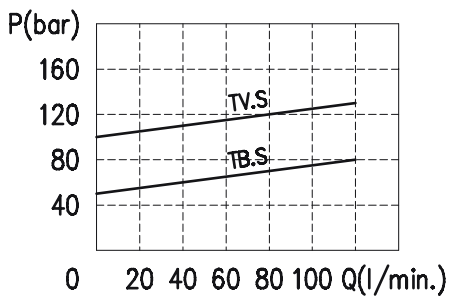
- 210 ()
- 350 ()

- 5 - 50 (: 30 5 /)
- 20 - 100 (: 60 5 /)
- 50 - 220 (: 160 5 /)
- 180 - 350 (: 280 5 /)

- . -25°C . 90°C
- . -20°C . 120°C

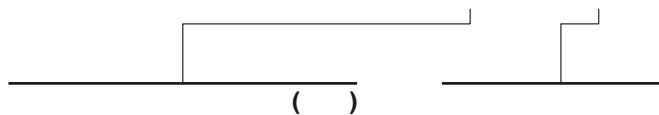


:
 - 1.80 4.04 ,
 :



- 46

VDSRL 20 - 34 / APP/ ** . S / **



TB) 5 - 50
 TV) 20 - 100
 TS) 50 - 220
 TR) 180 - 350

-
ac