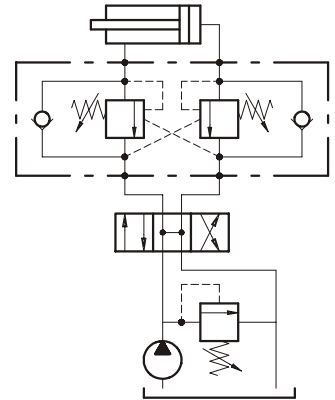


D1-D2	U1-U2
G 3/8	G 3/8



D1(D2) U1(U2)  
U1(U2) D1(D2),

D2(D1) - U2(U1).

( ) :

=

1:4,

250

130

30  
[(250 - 130) : 4 = 30]

D1(D2)

(1:1),

(1:1).

PG

: 40 /

:

: 210

: 350

- 5-210 ( :170 5 / ).

- 50-350 ( :280 5 / ).

- 100-700 ( :350 5 / ).

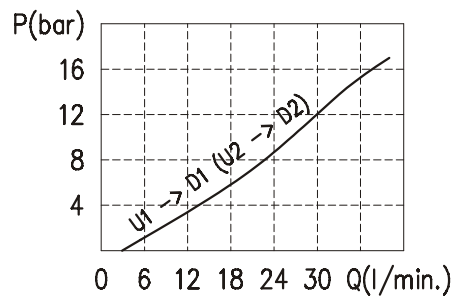
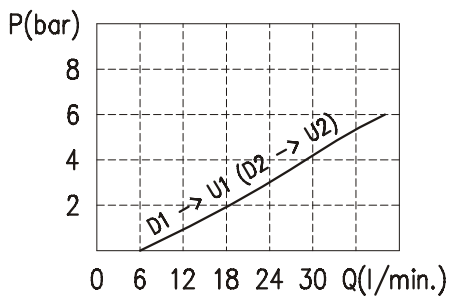
U1(U2) D1(D2): 0,25 <sup>3</sup>/ (5 ) 210 80%

46

- 1:4 ( )

- 1:3 ( )
- . -25°C . 90°C
- . -20°C . 120 °C

- : : 10 200 . 19/16 ISO 4406.
- : : 1.13
- : 2.16



- 46

VODL / SC 38 / \*\* .S. \*\* . \*\* . \*\* / \*\*



( )

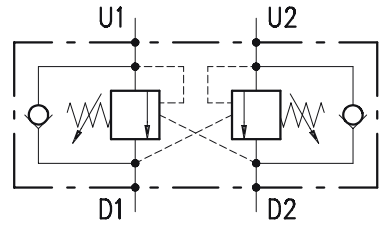
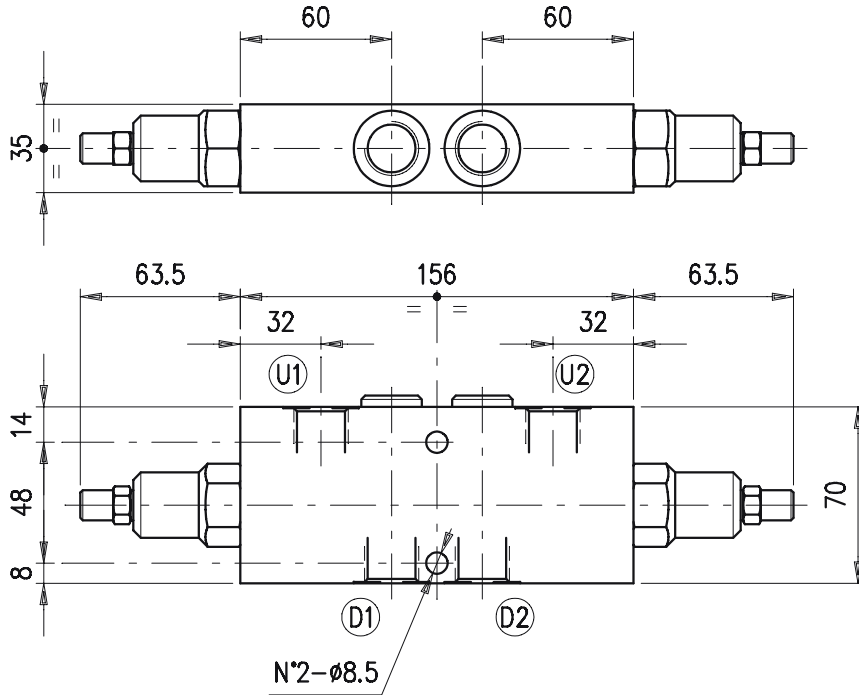
TS) 5 - 210  
TR) 50 - 350 ( . )  
TG) 100 - 700

P3) 1:3  
P4) 1:4 ( . )

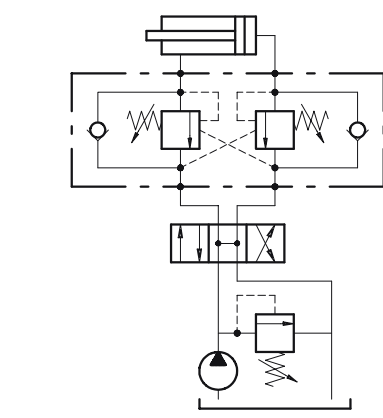
PG) ( . )

VRR)

ac



D1-D2	U1-U2
G 1/2	G 1/2



D1(D2) U1(U2)  
U1(U2) D1(D2),

D2(D1) - U2(U1).

( : =

1:4, 250, 130  
30 [(250 - 130) : 4 = 30 ]

D1(D2) (1:1), (1:1), PG

: 75 /  
:  
: 210  
: 350

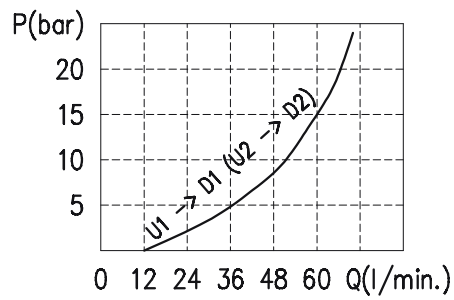
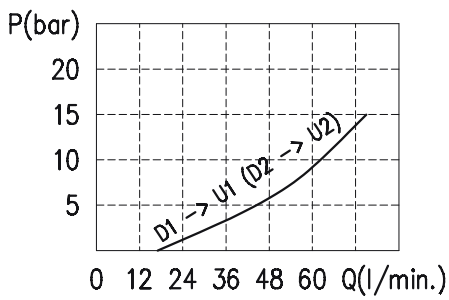
- 5-210 ( : 170 5 / ).
- 50-350 ( : 280 5 / ).
- 100-700 ( : 350 5 / ).

U1(U2) D1(D2): 0,25 <sup>3</sup>/ (5 ) 210 80%

- 1:7 ( )

- 1:3 ( )
- . -25°C . 90°C
- . -20°C . 120 °C

- : : 10 200 . 19/16 ISO 4406.
- : : 1.47
- : 2.89



- 46

**VODL / SC 12 / \*\* .S. \*\* . \*\* . \*\* / \*\***



( )

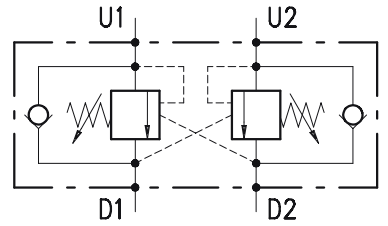
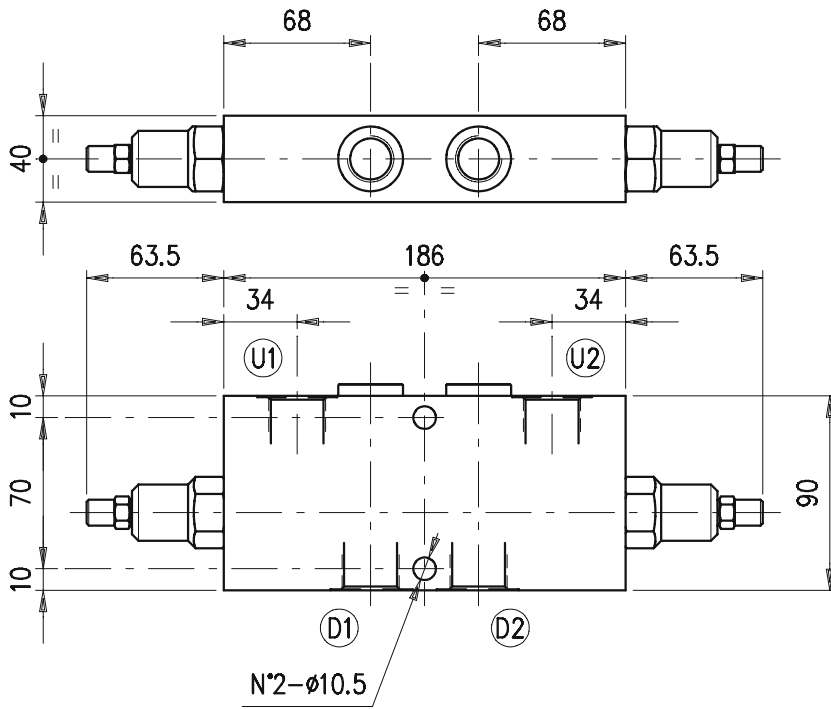
TS) 5 - 210  
TR) 50 - 350 ( . )  
TG) 100 - 700

P3) 1:3  
P7) 1:7 ( . )

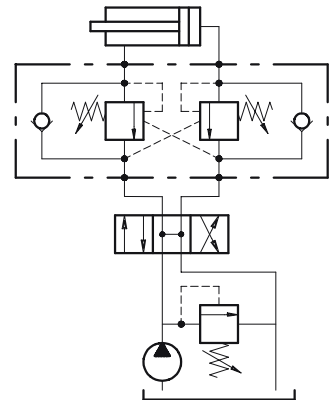
PG) ( . )

VRR)

ac



D1-D2	U1-U2
G 3/4	G 3/4



D1(D2) U1(U2)  
U1(U2) D1(D2),

D2(D1) - U2(U1).

( : ) :

1:4, 250, 130  
30  
[(250 - 130) : 4 = 30 ]

D1(D2)  
(1:1 )

(1:1 )

PG

: 120 /  
:  
: 210  
: 350

- 5-210 ( : 170 5 / ).
- 50-350 ( : 280 5 / ).
- 100-700 ( : 350 5 / ).

U1(U2) D1(D2): 0,25 <sup>3</sup>/ (5 ) 210 80%

46

- 1:7 ( )

- 1:3 ( )

- . -25°C . 90°C
- . -20°C . 120 °C

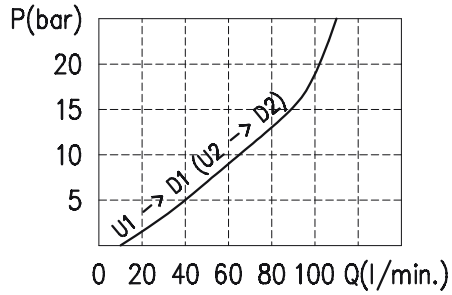
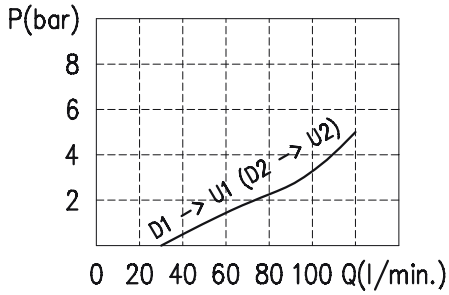
• : : 10 200 . 19/16 ISO 4406.

: :

- 2.22

- 4.75

: :



- 46

VODL / SC 34 / \*\* .S. \*\* . \*\* . \*\* / \*\*



( )

TS) 5 - 210

TR) 50 - 350 ( .)

TG) 100 - 700

P3) 1:3

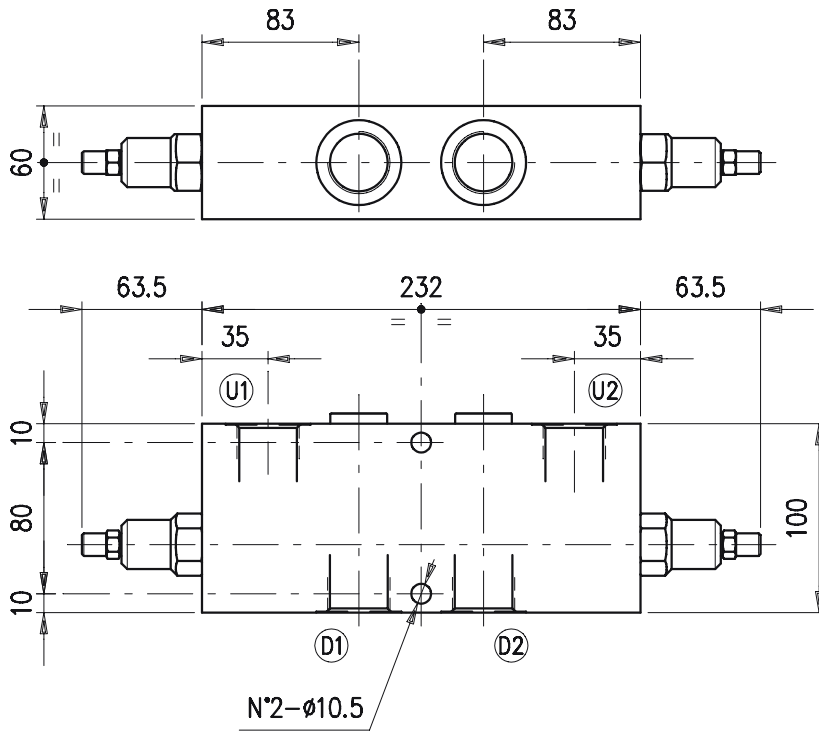
P7) 1:7 ( .)

PG)

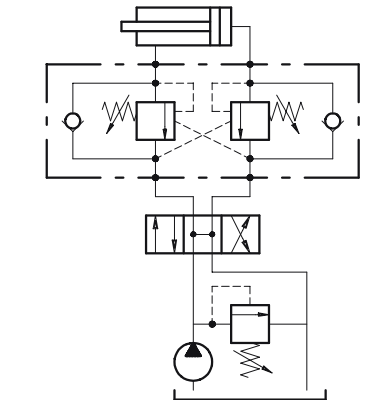
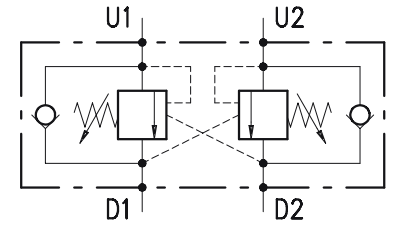
( .)

VRR)

ac



D1-D2	U1-U2
G 1"	G 1"



D1(D2) U1(U2)  
U1(U2) D1(D2),

D2(D1) - U2(U1).

( : =

1:4, 250, 130  
30 [(250 - 130) : 4 = 30 ]

D1(D2) (1:1), (1:1),

PG

: 180 /  
:  
: 210  
: 350

- 5-210 ( : 170 5 / ).
- 50-350 ( : 280 5 / ).
- 100-700 ( : 350 5 / ).

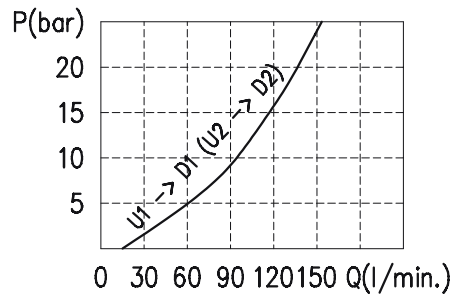
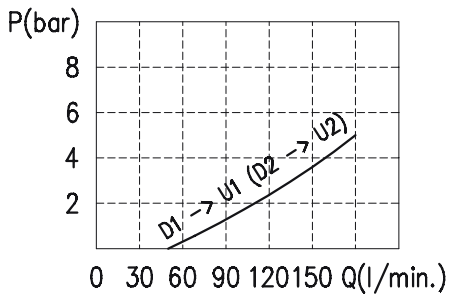
U1(U2) D1(D2): 0,25 <sup>3</sup>/ (5 ) 210 80%

46

- 1:7( )

- 1:3 ( )
- 25°C . 90°C
- 20°C . 120 °C

- : 10 200
- : 19/16 ISO 4406.
- : 4.28
- : 9.73



- 46

VODL / SC 100 / \*\* .S. \*\* . \*\* . \*\* / \*\*



( )

TS) 5 - 210  
TR) 50 - 350 ( . )  
TG) 100 - 700

P3) 1:3  
P7) 1:7 ( . )

PG)

( . )

VRR)

ac