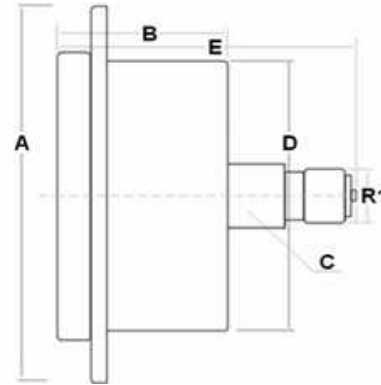


Pressure and vacuum gauges

Pressure gauges

## Pressure gauge DN 63 rear connection with glycerin (1/4" BSP)

Page: 1/2



**Accuracy:** 1,6%

**Dimensions:** A=83  
B=29  
C=14  
D=62  
E=53

**Temperature:** from -10 up to +60

**Material:** Case: stainless steel 304  
Ring: stainless steel 304  
Window: polycarbonate (glass)  
Socket & Connection: brass

Part n°	R1	Scale (bar)
<b>MFI6304001-DB</b>	1/4" BSP	0-1
<b>MFI63042.5-DB</b>	1/4" BSP	0-2.5
<b>MFI6304004-DB</b>	1/4" BSP	0-4
<b>MFI6304006-DB</b>	1/4" BSP	0-6
<b>MFI6304010-DB</b>	1/4" BSP	0-10
<b>MFI6304012-DB</b>	1/4" BSP	0-12
<b>MFI6304016-DB</b>	1/4" BSP	0-16
<b>MFI6304020-DB</b>	1/4" BSP	0-20
<b>MFI6304025-DB</b>	1/4" BSP	0-25
<b>MFI6304040-DB</b>	1/4" BSP	0-40
<b>MFI6304060-DB</b>	1/4" BSP	0-60
<b>MFI6304100-DB</b>	1/4" BSP	0-100
<b>MFI6304160-DB</b>	1/4" BSP	0-160

Pressure and vacuum gauges

Pressure gauges

## Pressure gauge DN 63 rear connection with glycerin (1/4" BSP)

Page: 2/2

Part n°	R1	Scale (bar)
<b>MF16304250-DB</b>	1/4" BSP	0-250
<b>MF16304315-DB</b>	1/4" BSP	0-315
<b>MF16304400-DB</b>	1/4" BSP	0-400
<b>MF16304600-DB</b>	1/4" BSP	0-600

\*\*\* Review attached PDF\*\*\*

With dual bar/psi scale